

# New Memorial School

## East Brunswick, New Jersey

PROJECT NUMBER: 2008-321

Construction Documents Issue for Bid  
August 2, 2010

Volume 2



### Project Team

**Owner:** East Brunswick Township Board of Ed.  
760 Route 18  
East Brunswick, New Jersey 08816  
T: 732.613.8716  
F: 732.698.0914

**Architect:** Design Ideas Group  
15 Bethany Street  
New Brunswick, New Jersey 08901  
T: 732.249.6242  
F: 732.247.1825

**Civil Engineer:** French & Parrello Associates  
1800 Route 24 Suite 101  
Wall, NJ 07719  
T: 732.312.9800  
F: 732.312.9801

**Structural Engineer:** Harrison-Hamnett, P.C.  
40 Knowles St.  
Parsippany, NJ 08543  
T: 609.818.1809  
F: 609.818.1809

**Mechanical Engineer:** O'Dea Lynch Abbattista  
50 Broadway  
Hawthorne, NJ 10563  
T: 914.747.2800  
F: 914.747.0453

**Food Service:** Romano-Gatland  
58 Albany St. Suite 201  
Amityville, NY 11701  
T: 631.226.7700  
F: 631.226.7175

**IT:** Educational Systems Planning  
48 Old Solomon's Island Rd. Suite 301  
Annapolis, MD 21401  
T: 410.573.9148  
F: 410.573.9215

**Acoustic Engineering:** Lewis S. Goodfriend & Associates  
760 Route 10 West  
Parsippany, NJ 07881-1159  
T: 973.560.0090  
F: 973.560.1270

### Drawing Index

ARCHITECTURAL/SITE/ CIVIL

**Volume 1**

A000 COVER SHEET  
C1 DEMOLITION PLAN  
C2 SITE PLAN  
C3 GRADING PLAN  
C4 DRAINAGE & UTILITY PLAN  
C5 SOIL EROSION & SEDIMENT CONTROL PLAN  
C6 SOIL EROSION & SEDIMENT CONTROL PLAN  
C7 LANDSCAPE PLAN  
C8 LANDSCAPE NOTES & DETAILS  
C9 LIGHTING PLAN  
C10 CONSTRUCTION DETAILS  
C11 CONSTRUCTION DETAILS  
C12 CONSTRUCTION DETAILS  
C13 CONSTRUCTION DETAILS  
C14 SANITARY PROFILES

A001 CODE NOTES & REFERENCES  
A002 DOOR & FRAME SCHEDULE, FLOOR TRANSITION DETAILS  
A003 DOOR & FRAME TYPES, HEAD & JAMB DETAILS  
A004 PARTITION TYPES  
A005 FINISH SCHEDULE  
A006 FIRST FLOOR EGRESS PLAN  
A007 SECOND FLOOR EGRESS PLAN  
A101 FIRST & BASEMENT FLOOR PLAN  
A102 SECOND FLOOR PLAN  
A103 ROOF PLAN  
A104 DEDUCT ALTERNATE BID #1 -PARTIAL PLANS & ELEV.  
A105 DEDUCT ALTERNATE BID #2 -2ND FLOOR & ROOF PLANS  
A106 DEDUCT ALTERNATE BID #7 -1ST & 2ND FLOOR PLANS  
A110 ENLARGED BASEMENT PLAN & COOLING UNIT ENCL.  
A111 ENLARGED FIRST FLOOR PLAN  
A112 ENLARGED SECOND FLOOR PLAN  
A113 ENLARGED FIRST FLOOR PLAN  
A114 ENLARGED FIRST FLOOR PLAN  
A115 ENLARGED SECOND FLOOR PLAN  
A116 ENLARGED SECOND FLOOR PLAN

A201 BUILDING ELEVATIONS  
A202 BUILDING ELEVATIONS  
A203 BUILDING ELEVATIONS  
A204 BUILDING ELEVATIONS  
A205 BUILDING ELEVATIONS  
A206 BUILDING SECTIONS  
A207 BUILDING SECTIONS  
A208 BUILDING SECTIONS  
A301 ENLARGED TOILET PLANS, ELEVATIONS & DETAILS  
A302 ENLARGED TOILET PLANS, ELEVATIONS & DETAILS  
A303 STAGE PLAN, ELEV., & DETAILS  
A304 STAGE RIGGING PLAN & ELEV.  
A305 STAGE RIGGING PLAN & SCHEDULE  
A311 INTERIOR ELEVATIONS  
A312 INTERIOR ELEVATIONS  
A313 INTERIOR ELEVATIONS  
A410 BASEMENT REFLECTED CEILING PLAN  
A411 FIRST FLOOR REFLECTED CEILING PLAN  
A412 FIRST FLOOR REFLECTED CEILING PLAN  
A413 FIRST FLOOR REFLECTED CEILING PLAN  
A414 FIRST FLOOR REFLECTED CEILING PLAN  
A415 SECOND FLOOR REFLECTED CEILING PLAN  
A416 SECOND FLOOR REFLECTED CEILING PLAN

A501 STAIR PLAN, SECTION & DETAILS  
A502 STAIR PLAN, SECTION & DETAILS  
A503 ELEVATOR PLAN, SECTION & DETAILS

A601 WALL SECTIONS  
A602 WALL SECTIONS  
A603 WALL SECTIONS  
A604 WALL SECTIONS  
A605 WALL SECTIONS  
A606 WALL SECTIONS  
A607 WALL SECTIONS  
A608 WALL SECTIONS  
A609 WALL SECTIONS  
A610 WALL SECTIONS  
A611 WALL SECTIONS  
A612 WALL SECTIONS  
A613 WALL SECTIONS  
A631 WALL SECTIONS  
A632 WALL SECTIONS  
A633 WALL SECTIONS  
A634 WALL SECTIONS  
A635 WALL SECTIONS  
A636 WALL SECTIONS  
A637 WALL SECTIONS  
A638 WALL SECTIONS  
A639 WALL SECTIONS  
A640 WALL SECTIONS  
A641 WALL SECTIONS

A700 WINDOW HEAD, JAMB, SILL DET., FRAME & GLAZING TYPES  
A701 CURTAINWALL ELEVATIONS  
A702 CURTAINWALL ELEVATIONS  
A703 STOREFRONT ELEVATIONS  
A704 STOREFRONT ELEVATIONS  
A705 TRANSLUCENT LINEAR GLASS & LOUVER ELEVATIONS  
A706 LOUVER & INTERIOR WINDOW ELEVATIONS  
A708 ROOF DETAILS  
A709 ROOF DETAILS  
A710 PLAN DETAILS  
A711 PLAN DETAILS  
A712 PLAN DETAILS  
A713 PLAN DETAILS

A801 CASEWORK ELEVATIONS  
A802 CASEWORK ELEVATIONS  
A803 CASEWORK ELEVATIONS  
A804 CASEWORK ELEVATIONS  
A805 CASEWORK ELEVATIONS  
A806 CASEWORK ELEVATIONS  
A807 CASEWORK ELEVATIONS  
A810 CUSTOM MILLWORK  
A811 CUSTOM MILLWORK  
A812 CUSTOM MILLWORK

STRUCTURAL

S-101 Building "A" Partial Foundation Plan  
S-102 Building "B" Partial Foundation Plan  
S-103 Building "B" Partial Foundation Plan  
S-104 Building "B" Partial Foundation Plan  
S-105 Building "B" Partial First Floor Framing Plan  
S-106 Building "A" Partial Low Roof Framing Plan  
S-107 Building "A" Partial Low Roof Framing Plan  
S-108 Building "B" Partial Second Floor Framing Plan  
S-109 Building "B" Partial Second Floor Framing Plan  
S-110 Building "A" Partial High Roof Framing Plan  
S-111 Building "A" Partial High Roof Framing Plan  
S-112 Building "B" Partial High Roof Framing Plan  
S-113 Building "B" Partial High Roof Framing Plan  
S-200 Building "B" Alternate Bid Plans  
S-300 Truss & Braced Frame Elevations  
S-601 Foundation Sections  
S-602 Foundation Sections  
S-603 Roof Sections  
S-604 Roof Sections  
S-605 Roof Sections  
S-606 Roof Sections  
S-700 Typical Details & General Notes

ELECTRICAL

E0.1 ELECTRICAL SYMBOLS, NOTES & ABBREVIATIONS  
E1.0 ELECTRICAL SITE PLAN  
E2.1 BASEMENT ELECTRICAL LIGHTING PLAN  
E2.2a FIRST FLOOR ELECTRICAL LIGHTING PART PLAN  
E2.2b FIRST FLOOR ELECTRICAL LIGHTING PART PLAN  
E2.2c FIRST FLOOR ELECTRICAL LIGHTING PART PLAN  
E2.2d FIRST FLOOR ELECTRICAL LIGHTING PART PLAN  
E2.3a SECOND FLOOR ELECTRICAL LIGHTING PART PLAN  
E2.3b SECOND FLOOR ELECTRICAL LIGHTING PART PLAN  
E2.3c SECOND FLOOR ELECTRICAL LIGHTING PART PLAN  
E2.3d SECOND FLOOR ELECTRICAL LIGHTING PART PLAN  
E3.0 ELECTRICAL UNDER SLAB POWER PLAN  
E3.1 BASEMENT ELECTRICAL POWER PLAN  
E3.2a FIRST FLOOR ELECTRICAL POWER PART PLAN  
E3.2b FIRST FLOOR ELECTRICAL POWER PART PLAN  
E3.2c FIRST FLOOR ELECTRICAL POWER PART PLAN  
E3.2d FIRST FLOOR ELECTRICAL POWER PART PLAN  
E3.3a SECOND FLOOR ELECTRICAL POWER PART PLAN  
E3.3b SECOND FLOOR ELECTRICAL POWER PART PLAN  
E3.3c SECOND FLOOR ELECTRICAL POWER PART PLAN  
E3.3d SECOND FLOOR ELECTRICAL POWER PART PLAN  
E3.4a ROOF ELECTRICAL POWER PART PLAN  
E3.4b ROOF ELECTRICAL POWER PART PLAN  
E3.4c ROOF ELECTRICAL POWER PART PLAN  
E3.4d ROOF ELECTRICAL POWER PART PLAN  
E4.1 BASEMENT ELECTRICAL FIRE ALARM PLAN  
E4.2a FIRST FLOOR ELECTRICAL FIRE ALARM PART PLAN  
E4.2b FIRST FLOOR ELECTRICAL FIRE ALARM PART PLAN  
E4.2c FIRST FLOOR ELECTRICAL FIRE ALARM PART PLAN  
E4.2d FIRST FLOOR ELECTRICAL FIRE ALARM PART PLAN  
E4.3a SECOND FLOOR ELECTRICAL FIRE ALARM PART PLAN  
E4.3b SECOND FLOOR ELECTRICAL FIRE ALARM PART PLAN  
E4.3c SECOND FLOOR ELECTRICAL FIRE ALARM PART PLAN  
E4.3d SECOND FLOOR ELECTRICAL FIRE ALARM PART PLAN  
E5.0 ELECTRICAL ONE-LINE DIAGRAM  
E5.1 FIRE ALARM RISER DIAGRAM  
E5.2 ELECTRICAL WIRING AND RISER DIAGRAMS  
E5.3 ELECTRICAL WIRING AND RISER DIAGRAMS  
E6.1 ELECTRICAL PANEL SCHEDULES  
E6.2 ELECTRICAL PANEL SCHEDULES  
E6.3 ELECTRICAL PANEL SCHEDULES  
E6.4 ELECTRICAL PANEL SCHEDULES  
E6.5 ELECTRICAL SCHEDULES  
E7.1 ELECTRICAL DETAILS  
E7.2 ELECTRICAL DETAILS

**Volume 2**

FIRE PROTECTION

F0.1 FIRE PROTECTION SYMBOLS, ABBREVIATIONS, AND NOTES  
F2.1 BASEMENT FIRE PROTECTION PLAN  
F2.2a FIRST FLOOR FIRE PROTECTION PART PLAN  
F2.2b FIRST FLOOR FIRE PROTECTION PART PLAN  
F2.2c FIRST FLOOR FIRE PROTECTION PART PLAN  
F2.2d FIRST FLOOR FIRE PROTECTION PART PLAN  
F2.3a SECOND FLOOR FIRE PROTECTION PART PLAN  
F2.3b SECOND FLOOR FIRE PROTECTION PART PLAN  
F2.3c SECOND FLOOR FIRE PROTECTION PART PLAN  
F3.1 FIRE PROTECTION FIRE PUMP PLAN AND SCHEMATIC  
F5.1 FIRE PROTECTION RISER DIAGRAM  
F7.1 FIRE PROTECTION DETAILS

PLUMBING

P0.1 PLUMBING SYMBOLS, ABBREVIATIONS, AND NOTES  
P2.1 BASEMENT AND FIRST FLOOR SUB-SLAB PLUMBING PLANS  
P2.2a FIRST FLOOR PLUMBING PART PLANS  
P2.2b FIRST FLOOR PLUMBING PART PLANS  
P2.2c FIRST FLOOR PLUMBING PART PLANS  
P2.2d FIRST FLOOR PLUMBING PART PLANS  
P2.3a SECOND FLOOR PLUMBING PART PLANS  
P2.3b SECOND FLOOR PLUMBING PART PLANS  
P2.3c SECOND FLOOR PLUMBING PART PLANS  
P2.4 ROOF PLUMBING PLAN  
P3.1 PLUMBING PART PLANS AND ELEVATIONS  
P5.1 PLUMBING SANITARY RISERS  
P5.2 PLUMBING SANITARY RISERS  
P5.3 PLUMBING DOMESTIC WATER RISERS  
P5.4 PLUMBING DOMESTIC WATER RISERS  
P5.5 PLUMBING GAS RISER  
P5.6 PLUMBING STORM RISERS  
P5.7 PLUMBING STORM RISERS  
P7.1 PLUMBING DETAILS  
P7.2 PLUMBING DETAILS  
P7.3 PLUMBING SEISMIC DETAILS

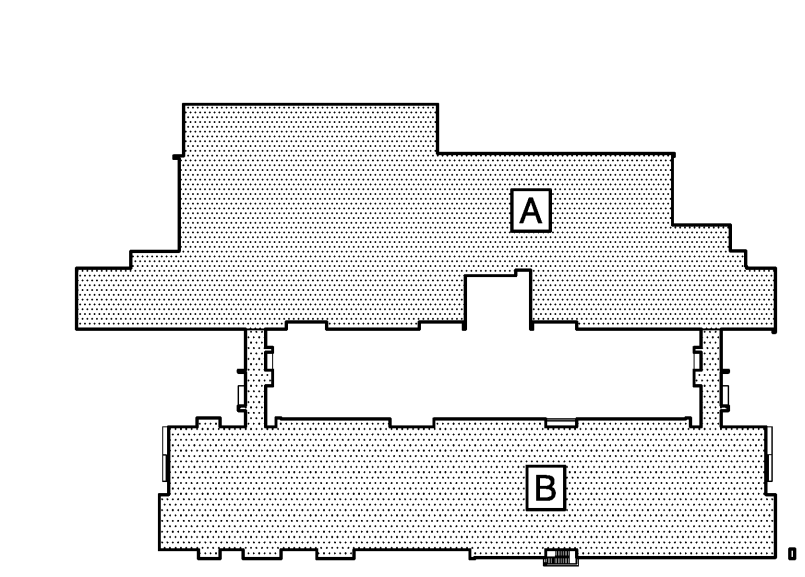
MECHANICAL

M0.1 MECHANICAL SYMBOLS, ABBREVIATIONS, AND NOTES  
M2.1a FIRST FLOOR MECHANICAL PART PLAN  
M2.1b FIRST FLOOR MECHANICAL PART PLAN  
M2.1c FIRST FLOOR MECHANICAL PART PLAN  
M2.1d FIRST FLOOR MECHANICAL PART PLAN  
M2.2a SECOND FLOOR MECHANICAL PART PLAN  
M2.2b SECOND FLOOR MECHANICAL PART PLAN  
M2.3 ROOF MECHANICAL PLAN  
M3.1a FIRST FLOOR MECHANICAL PIPING PART PLAN  
M3.1b FIRST FLOOR MECHANICAL PIPING PART PLAN  
M3.1c FIRST FLOOR MECHANICAL PIPING PART PLAN  
M3.1d FIRST FLOOR MECHANICAL PIPING PART PLAN  
M3.2a SECOND FLOOR MECHANICAL PIPING PART PLAN  
M3.2b SECOND FLOOR MECHANICAL PIPING PART PLAN  
M3.2c SECOND FLOOR MECHANICAL PIPING PART PLAN  
M5.1 BOILER AND CHILLER ROOM MECHANICAL PART PLAN  
M5.2 BASEMENT MECHANICAL ROOM PART PLAN  
M5.3 MECHANICAL ROOM ABOVE STAGE PART PLAN  
M6.1 MECHANICAL ROOM ABOVE COMPUTER LAB PART PLAN  
M6.2 MECHANICAL SCHEDULES  
M6.3 MECHANICAL SCHEDULES  
M6.4 MECHANICAL SCHEDULES  
M7.1 MECHANICAL DETAILS  
M7.2 MECHANICAL DETAILS  
M7.3 MECHANICAL DETAILS  
M7.4 MECHANICAL DETAILS

FOOD SERVICES

FS-101 FOODSERVICE ARRANGEMENT PLAN  
FS-102 FOODSERVICE SCHEDULE OF EQUIPMENT  
FS-103 FOODSERVICE ELECTRICAL PLAN  
FS-104 FOODSERVICE PLUMBING PLAN  
FS-105 FOODSERVICE SPECIAL CONDITIONS PLAN  
FS-106 FOODSERVICE SECTIONS / DETAILS  
FS-107 FOODSERVICE SECTIONS / DETAILS

### Key Plan



REVISIONS		
No.	Date	Description
	08/02/10	Issue for Bid
	06/15/10	Issue for Code Review

**Design Ideas Group**  
architecture + planning, llc

15 Bethany Street  
New Brunswick, NJ 08901  
T: 732.249.6242 F: 732.247.1825

40 West Street  
Basking Ridge, NJ 08854  
T: 973.987.0400 F: 973.987.0602

**New Memorial School**  
East Brunswick, New Jersey

Owner:  
East Brunswick Township Board of Ed.  
760 Route 18  
East Brunswick, New Jersey 08816

Drawing Title:  
Drawing Index / Symbols / Abbrev.

Project No.: 2008-321 Date: 08/02/10

Scale: As Noted File Location: NB

Richard D. Adams, AIA  
NJ RA A1 0523 NY RA 027416

Vincent A. Myers, AIA  
NJ RA A1 1415

Joseph P. Tommino, AIA PP  
NJ RA 0268 NJ PP 2465 PA RA 08732 CT RA 9600  
DC RA ABC10054 DE RA 55-006879 MD RA 8887  
VA RA 040101785 VT RA 03-0001370

Warren W. Weber, AIA  
NJ RA A1 0883 NY RA 01062-1

©Design Ideas Group 2008. Unauthorized reproduction or other use of these drawings or ideas is prohibited.

### Abbreviations

A.F.F.	ABOVE FINISH FLOOR	L.D.R.	LEADER
ALUM.	ALUMINUM	L.P.	LOW POINT
@	AT	M.H.	MANHOLE
ACOUS.	ACOUSTIC	M.O.	MASONRY OPENING
ALT.	ALTERNATE	MAX.	MAXIMUM
BM.	BEAM	M.E.P.	MECHANICAL, ELECTRICAL & PLUMBING
B.E.J.	BUILDING EXPANSION JOINT	M.E.R.	MECHANICAL EQUIPMENT ROOM
BET.	BETWEEN	MTL.	METAL
BLK.	BLOCK OR BLOCKING	M.F.D.	METAL FLOOR DECK
BD.	BOARD	M.F.R.	MANUFACTURER
BOT.	BOTTOM	M.R.D.	METAL ROOF DECK
BLDG.	BUILDING	MISC.	MISCELLANEOUS
B.O.	BOTTOM OF	N.	NORTH
C.B.	COLLECTOR BOX	N.J.P.E.	NEW JERSEY PROFESSIONAL ENGR.
CEM.	CEMENT	N.I.C.	NOT IN CONTRACT
CEM. PLAS.	CEMENT PLASTER	N.T.S.	NOT TO SCALE
C.L.	CENTER LINE	NO.	NUMBER
CONC.	CONCRETE	O.C.	ON CENTER
C.M.U.	CONCRETE MASONRY UNIT	OPNG.	OPENING
CONT.	CONTINUOUS	OPP.	OPPOSITE HAND
CONTR.	CONTRACTOR	O.D.	OUTSIDE DIAMETER
C.J.	CONTROL JOINT	O.A.	OVERALL
COORD.	COORDINATE	PART.	PARTITION
CTS.K.	COUNTERSUNK	PLAS.	PLASTER
DET.	DETAIL	PL.	PLATE
DIAM.	DIAMETER	PNT.	PAINT
D.F.	DRINKING FOUNTAIN	P.T.	PRESSURE TREATED
DR.	DOOR	PTD.	PAINTED
DN.	DOWN	REV.	REVISION
EA.	EACH	R.	RISERS
EL.	ELEVATION	R.D.	ROOF DRAIN
E.O.S.	EDGE OF SLAB	RM.	ROOM
EXIST.	EXISTING	R.O.	ROUGH OPENING
EXP. JT.	EXPANSION JOINT	SECT.	SECTION
EXP.	EXPOSED	S.P.	STEEL PIPE COLUMN
EXT.	EXTERIOR	SPECS.	SPECIFICATIONS
EXTR.	EXTRUDED	SQ.	SQUARE
FT.	FEET	SQ. FT.	SQUARE FEET
FIN.	FINISH	S.S.	STAINLESS STEEL
FIN. FLR.	FINISH FLOOR	STL.	STEEL
F.G.	FINISH GRADE	STRUCT.	STRUCTURAL
F.E.	FIRE EXTINGUISHER	SUSP.	SUSPENDED
F.P.	FIREPROOFING	T.O.	TOP OF
F.O.	FACE OF	T.O.C.	TOP OF CURB
F.L.	FLOOR	T.O.S.	TOP OF SLAB
F.D.	FLOOR DRAIN	T.O.STL.	TOP OF STEEL
F.O.W.	FACE OF WALL	T.	TREADS
FOUND.	FOUNDATION	T.O.P.	TOP OF PARAPET
GALV.	GALVANIZED	T.O.W.	TOP OF WALL
GA.	GAUGE	THP.	TYPICAL
G.C.	GENERAL CONTRACTOR	U.L.	UNDERWRITERS LABORATORY
H.R.	HAND RAIL	U.O.N.	UNLESS OTHERWISE NOTED
HDWR.	HARDWARE	VERT.	VERTICAL
H.S.S.	STEEL TUBE BEAM OR COLUMN	V.I.F.	VERIFY IN FIELD
HT.	HEIGHT	W.C.	WATER CLOSET
H.P.	HIGH POINT	W.F.	WIDE FLANGE BEAM OR COLUMN
H.M.	HOLLOW METAL	W.P.	WORK POINT
HOR.	HORIZONTAL	W.P.F.	WATERPROOFING
I.D.	INSIDE DIAMETER	W.W.M.	WELDED WIRE MESH
I.D.F.	INTERMEDIATE DISTRIBUTION FRAME	W.	WITH
INSUL.	INSULATION	W/D.	WOOD

### Symbols

MATERIAL DESIGNATION	
	GRAVEL OR POROUS FILL
	GROUT
	CONCRETE
	EARTH
	PROTECTION BOARD/ GYPSUM BOARD
	RIGID INSULATION
	CONCRETE MASONRY UNITS
	PLYWOOD
	NEW PARTITION COORD. WITH PARTITION TYPE
	BRICK/ CMU VENEER
	STEEL

DETAILS & ELEVATIONS	WINDOWS & DOORS

MISCELLANEOUS	
	INTERIOR ELEVATION
	TOILET ACCESSORY BUILT-IN EQUIPMENT
	GENERAL NOTE
	DEMOLITION NOTE

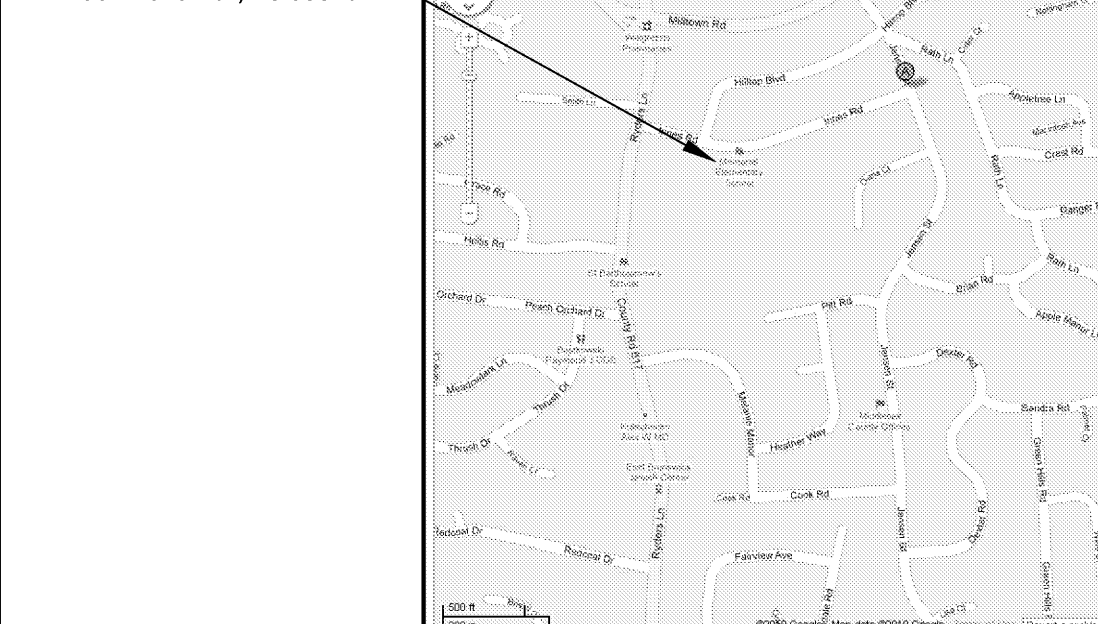
MATERIAL KEY NOTES	DOCUMENT REVIEW
MATERIAL KEY NOTES ARE USED IN LIEU OF STANDARD NOTES IN ORDER TO IMPROVE READABILITY OF DOCUMENTS. MATERIAL KEY NOTES ARE IN CSI FORMAT AND REFER TO SPECIFICATION SECTIONS IN WHICH SPECIFIC MATERIALS APPEAR.	EACH CONTRACTOR IS RESPONSIBLE FOR REVIEWING ALL ARCHITECTURAL, CIVIL, STRUCTURAL, HVAC, FIRE PROTECTION, PLUMBING, ELECTRICAL & TECHNOLOGY DRAWINGS. ALL DOCUMENTS CONTAIN INFORMATION WHICH IS COMPLIMENTARY TO EACH TRADE AND MUST BE REVIEWED & UNDERSTOOD PRIOR TO BIDDING THIS PROJECT.
REFERENCE NOTES	WORK
NOTES PERTAINING TO SPECIFIC MATERIALS, DIMENSIONS, AND/OR DESCRIPTIONS OF WORK AS THEY RELATE TO THE DRAWINGS ON WHICH THEY APPEAR. ALL REFERENCE NOTES ARE COMPLIMENTARY TO EACH DRAWING AND ARE TO BE CAREFULLY REVIEWED PRIOR TO CONSTRUCTION.	WORK SHALL BE PERFORMED IN STRICT ACCORDANCE WITH NATIONAL, LOCAL & ALL OTHER APPLICABLE CODES & REQUIREMENTS AS DETERMINED BY AUTHORITIES HAVING JURISDICTION.

### Applicable Codes

UNIFORM CONSTRUCTION CODE (N.J.A.C. 5:23)  
2006 INTERNATIONAL BUILDING CODE  
2006 NATIONAL ELECTRICAL CODE  
2006 NATIONAL STANDARD PLUMBING CODE  
2006 INTERNATIONAL ENERGY CONSERVATION CODE  
ASHRAE 90.1-2004  
2006 INTERNATIONAL MECHANICAL CODE  
2006 INTERNATIONAL FUEL GAS CODE  
REHABILITATION SUB CODE  
BARRIER FREE SUB CODE  
ANSI A117.1-2003

NJ DEPARTMENT OF EDUCATION  
SCHOOL FACILITIES PLANNING SERVICES N.J.A.C. 6:22-1.1 ET SEQ.

### Location Map



### Key Plan (N.T.S.)

