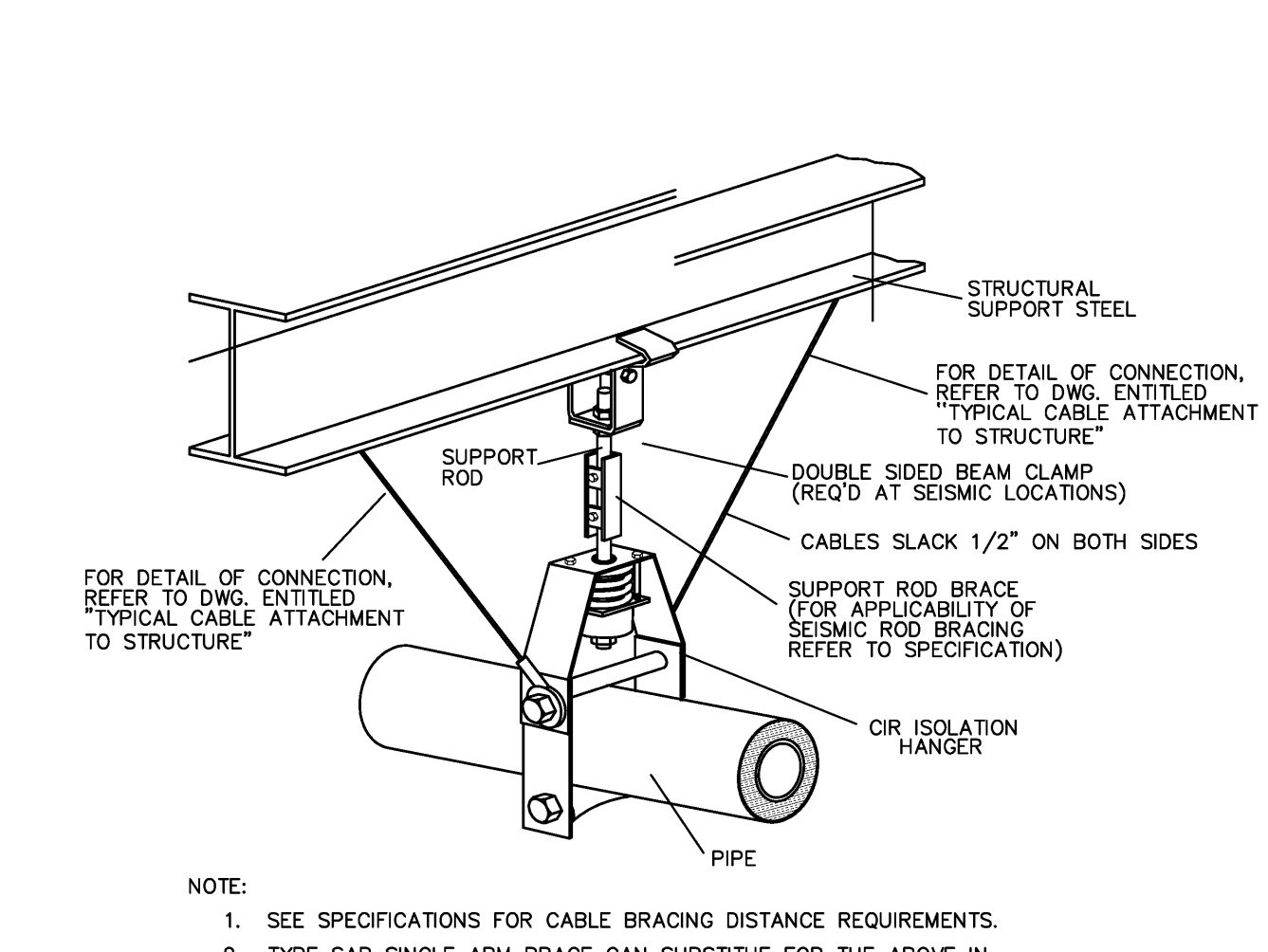


NOTE:  
 1. SEE SPECIFICATIONS FOR CABLE BRACING DISTANCE REQUIREMENTS.  
 2. TYPE SAB SINGLE ARM BRACE CAN SUBSTITUTE FOR THE ABOVE IN NON ISOLATED APPLICATIONS (1- SIDE ONLY.)

**1** TYPICAL TRANSVERSE CABLE BRACING OF NON ISOLATED PIPE, CLEVIS HUNG

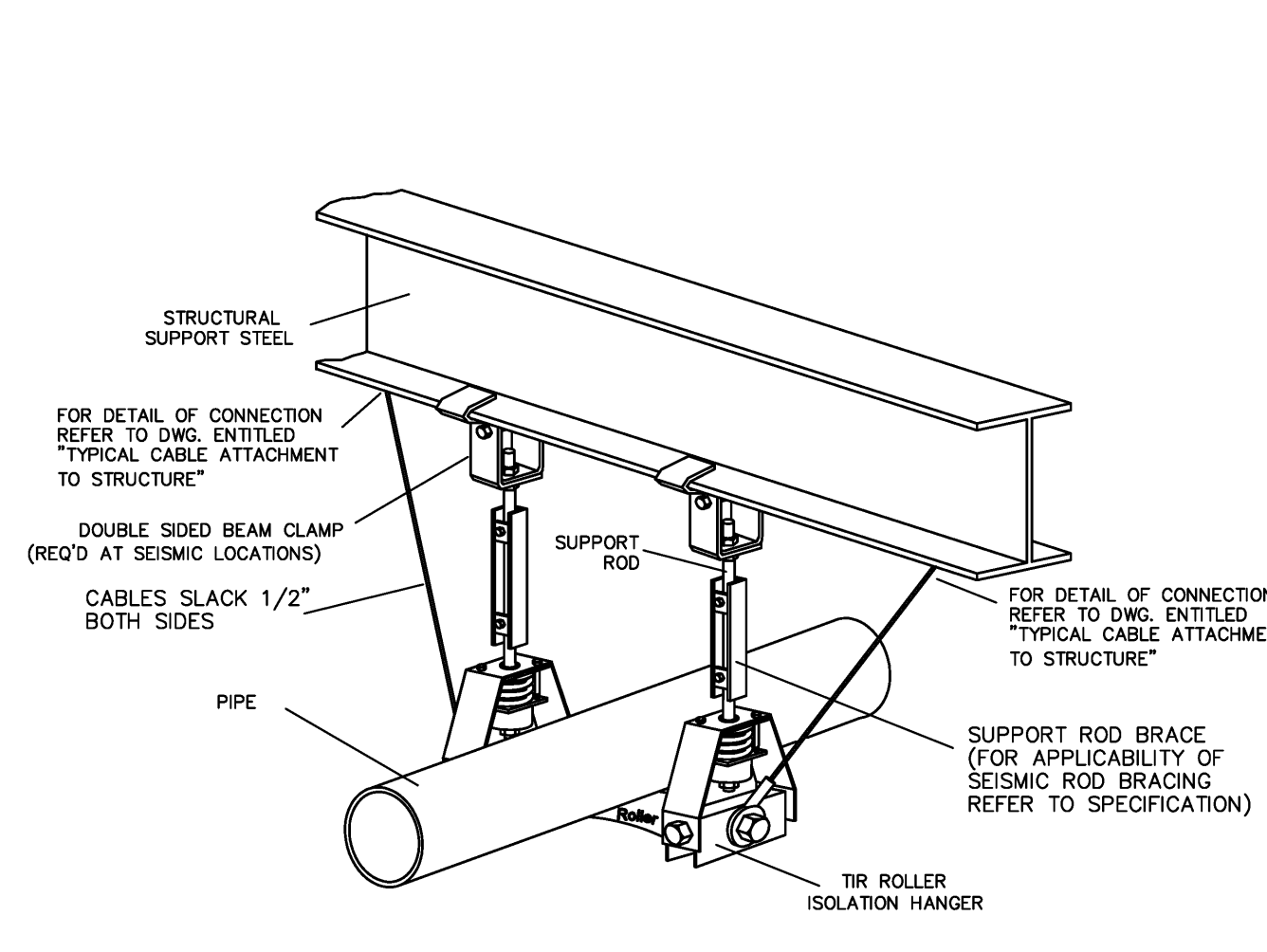
VMC INC. SPEC TYPE - ISOLATOR (F.I.) -4 -B  
 RESTRAINT (III) -17



NOTE:  
 1. SEE SPECIFICATIONS FOR CABLE BRACING DISTANCE REQUIREMENTS.  
 2. TYPE SAB SINGLE ARM BRACE CAN SUBSTITUTE FOR THE ABOVE IN NON ISOLATED APPLICATIONS (1- SIDE ONLY.)

**2** TYPICAL TRANSVERSE CABLE BRACING OF NON ISOLATED PIPE, HARVARD ROLLER STYLE

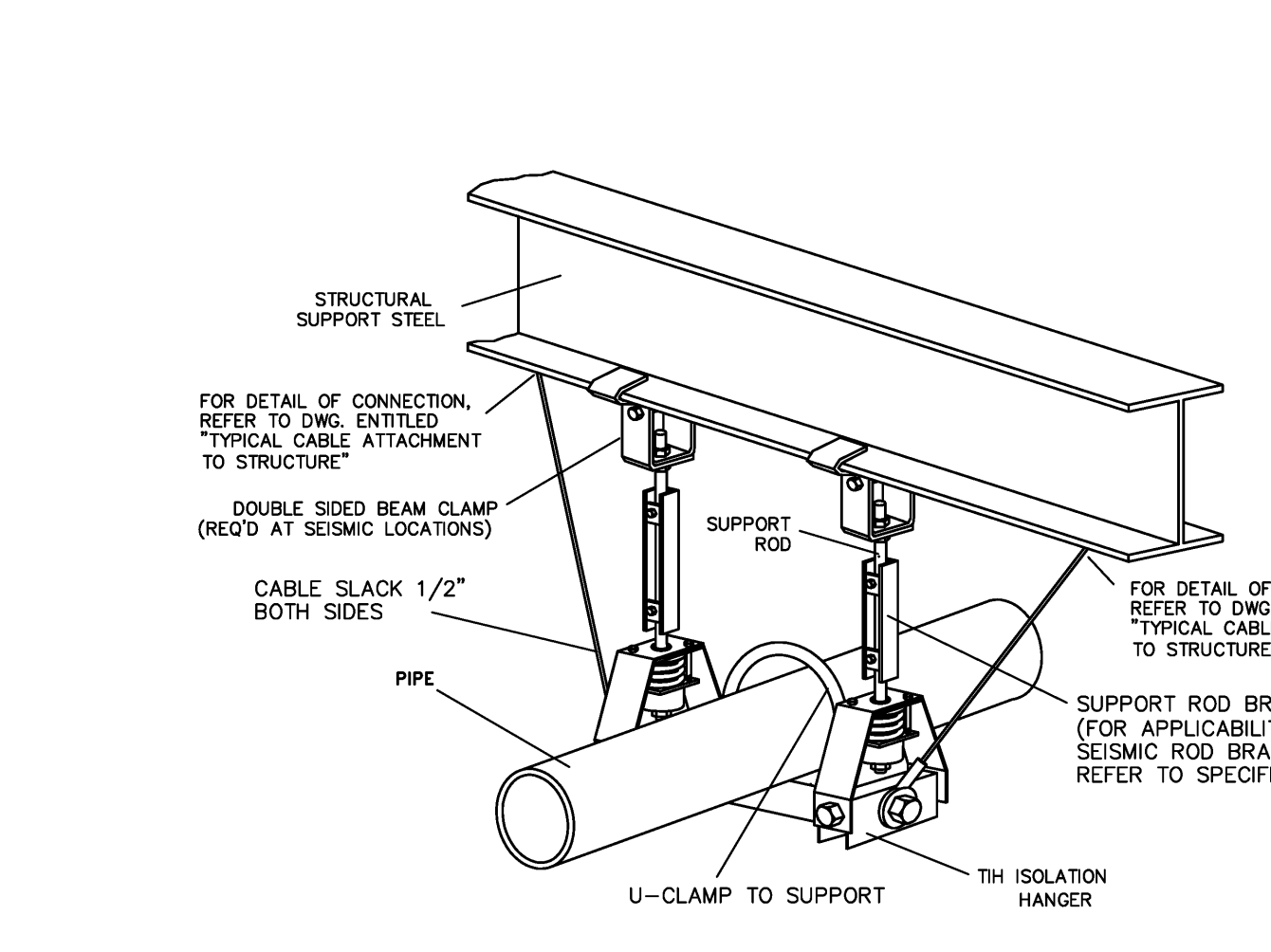
VMC INC. SPEC. TYPE - ISOLATOR (F.C.) -4 -B  
 RESTRAINT ( III ) -17



NOTE:  
 1. SEE SPECIFICATIONS FOR CABLE BRACING DISTANCE REQUIREMENTS.

**3** TYPICAL TRANSVERSE CABLE BRACING OF ISOLATED TRAPEZE (ROLLER)

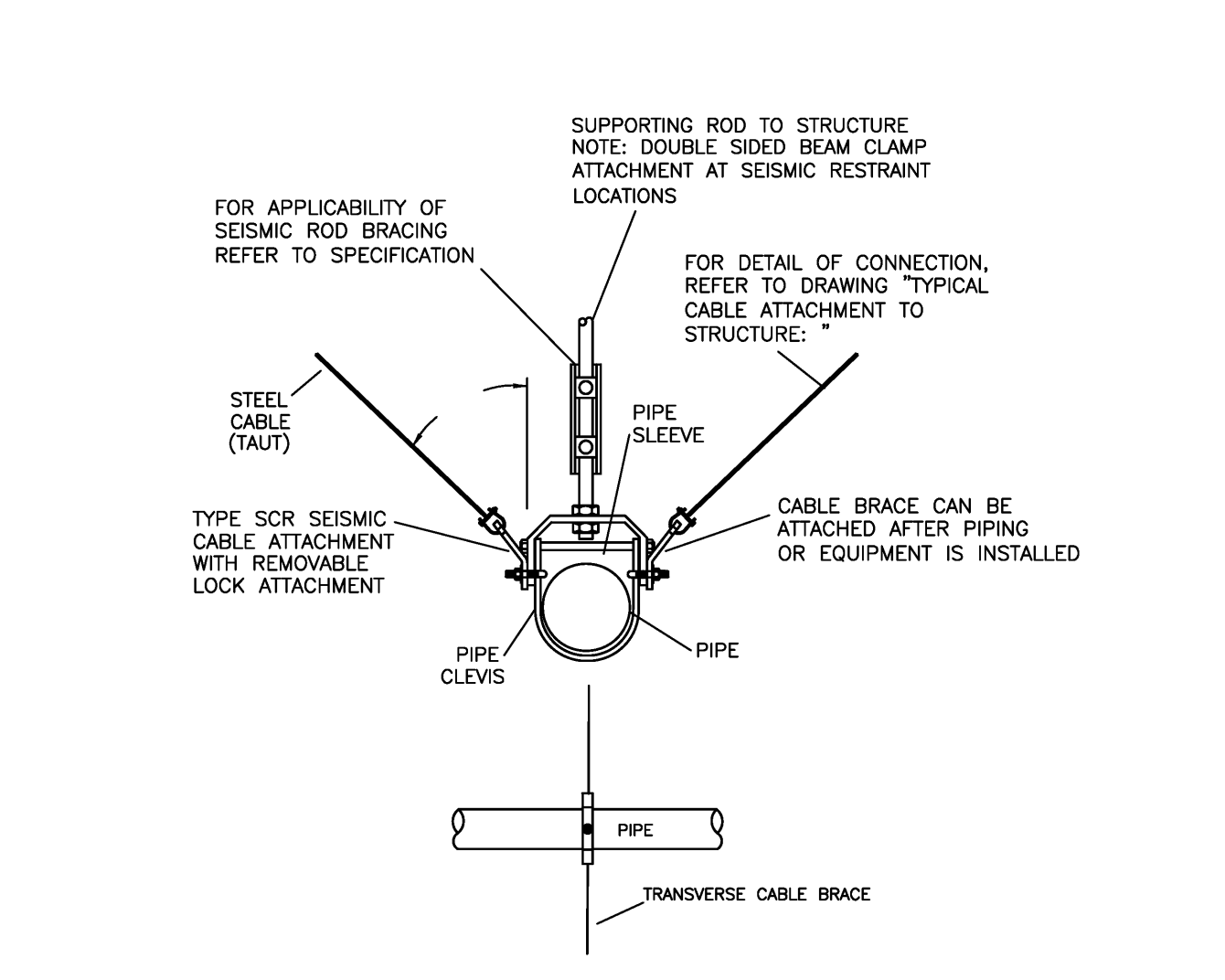
VMC INC. TYPE - ISOLATOR (F.I.)  
 RESTRAINT(III)



NOTE:  
 1. SEE SPECIFICATIONS FOR CABLE BRACING DISTANCE REQUIREMENTS.

**4** TYPICAL TRANSVERSE CABLE BRACING OF ISOLATED PIPE, TRAPEZE HUNG

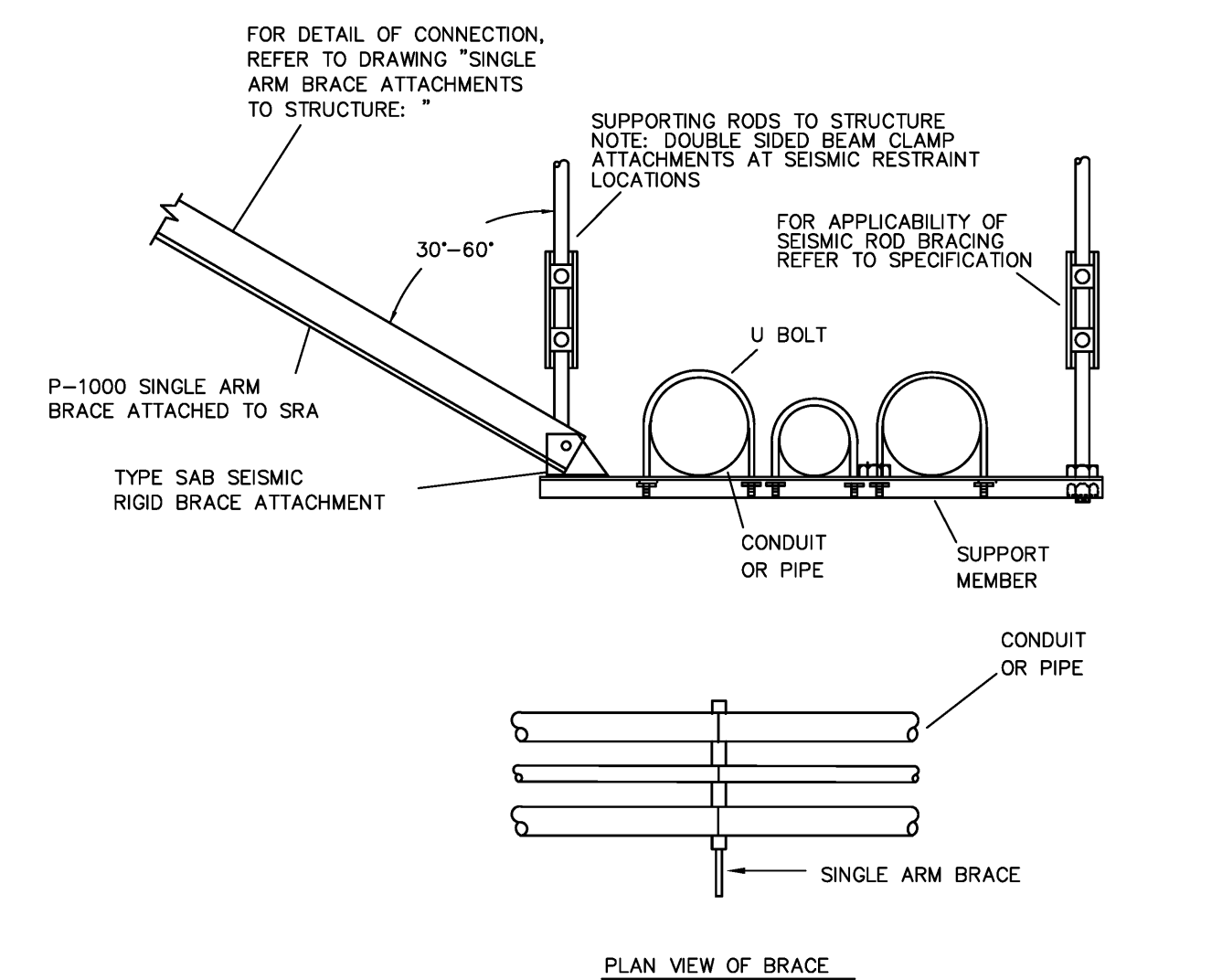
VMC INC. SPEC. TYPE - ISOLATOR (F.L.)  
 RESIBAIN(III)



NOTE: 1. SEE SPECIFICATION FOR CABLE BRACING DISTANCE REQUIREMENTS.  
 2. SLACK CABLE 1/2" IN CENTER IF ISOLATED.

**5** TYPICAL TRANSVERSE CABLE BRACE FOR CLEVIS HUNG PIPING & CONDUIT

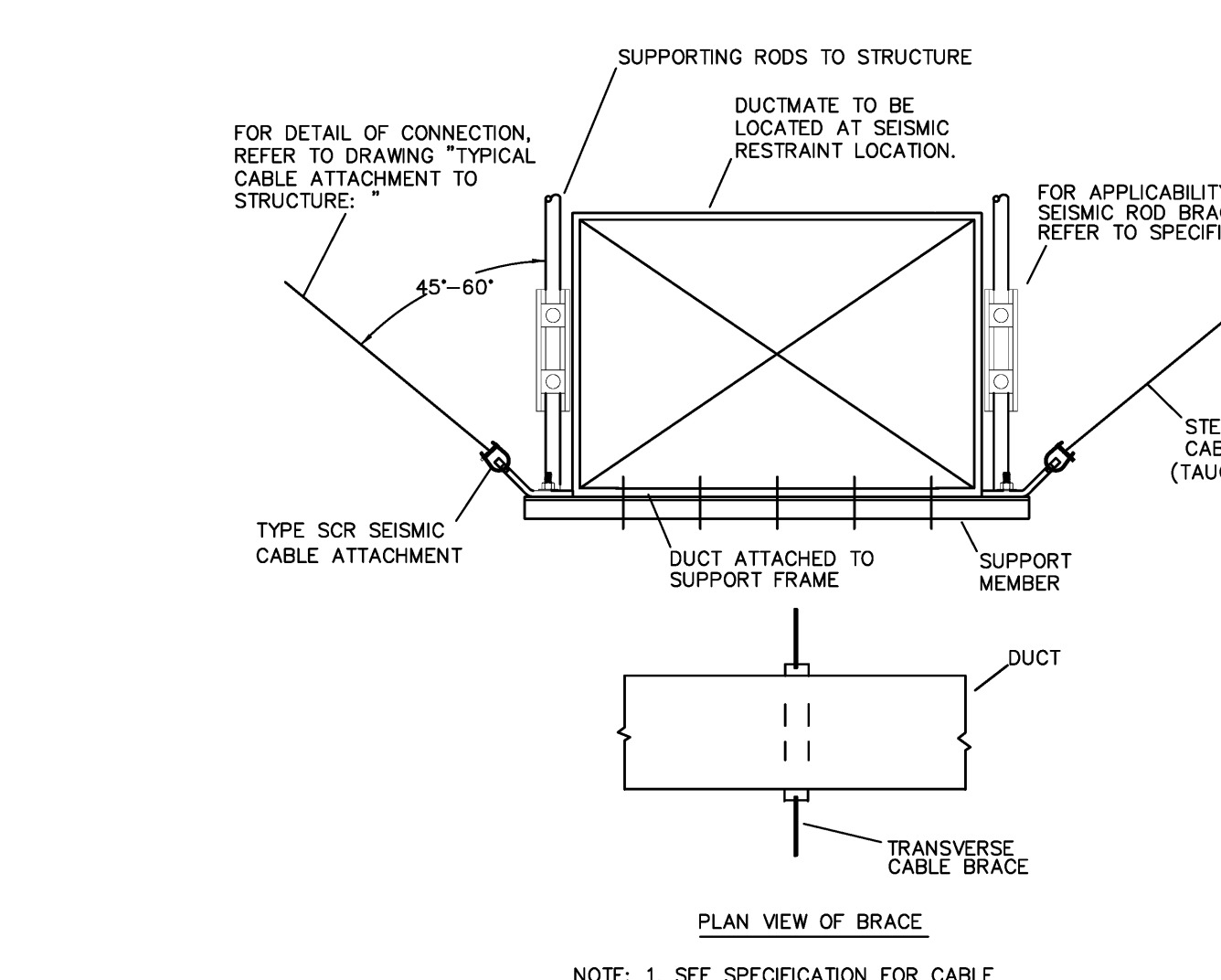
VMC INC. SPEC TYPE - RESTRAINT III



NOTE: 1. SEE SPECIFICATION FOR RIGID BRACING DISTANCE REQUIREMENTS.  
 NOTE: 2. CANNOT BE USED WITH ISOLATION HANGERS.

**6** TRANSVERSE SINGLE ARM BRACE FOR TRAPEZE HUNG PIPE AND CONDUIT

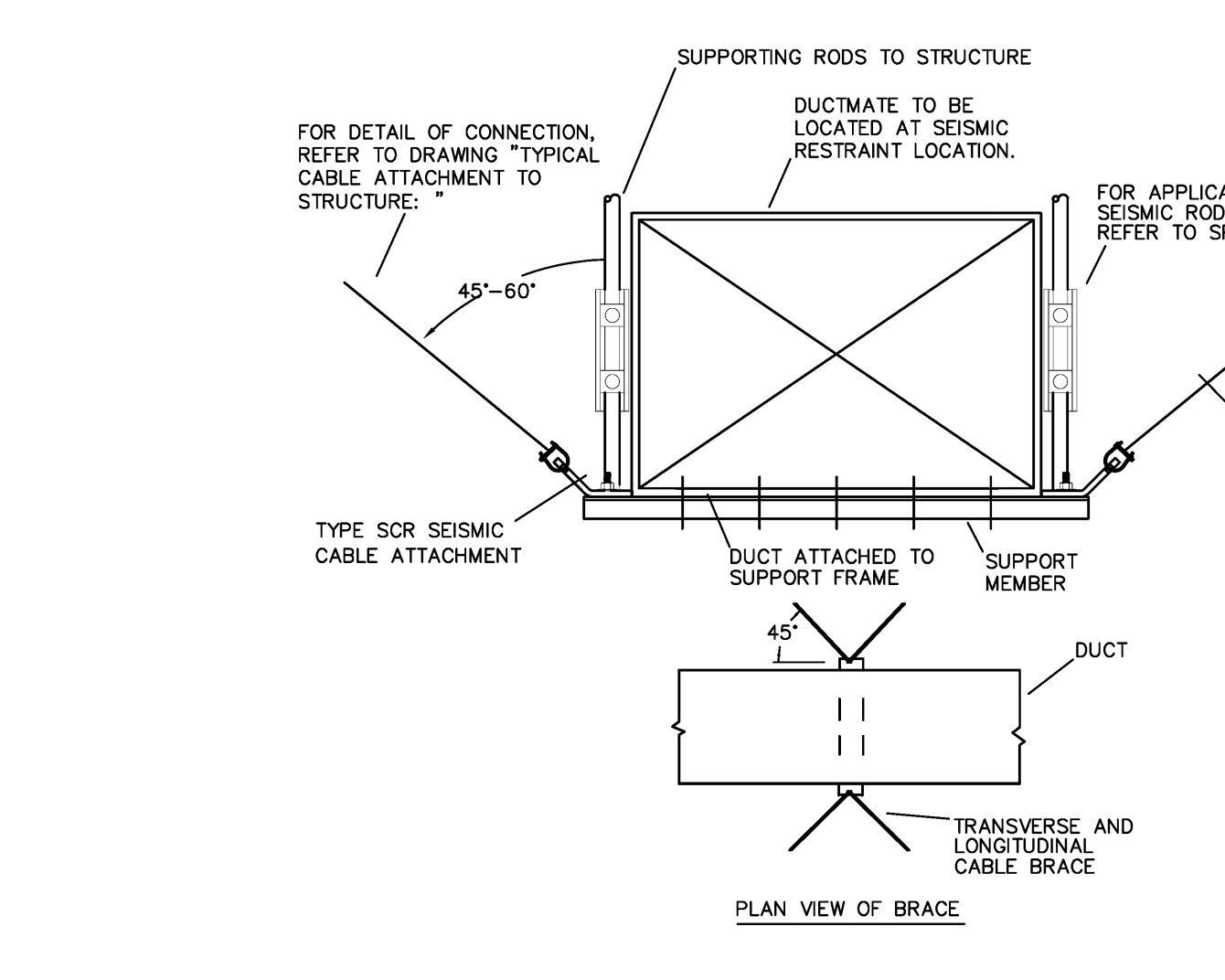
VMC INC. SPEC TYPE - RESTRAINT 17



NOTE: 1. SEE SPECIFICATION FOR CABLE BRACING DISTANCE REQUIREMENTS.  
 2. FILET WELD ON EACH SIDE OF SCR OR A-307 BOLT.

**7** TRANSVERSE CABLE BRACE FOR NETWORK

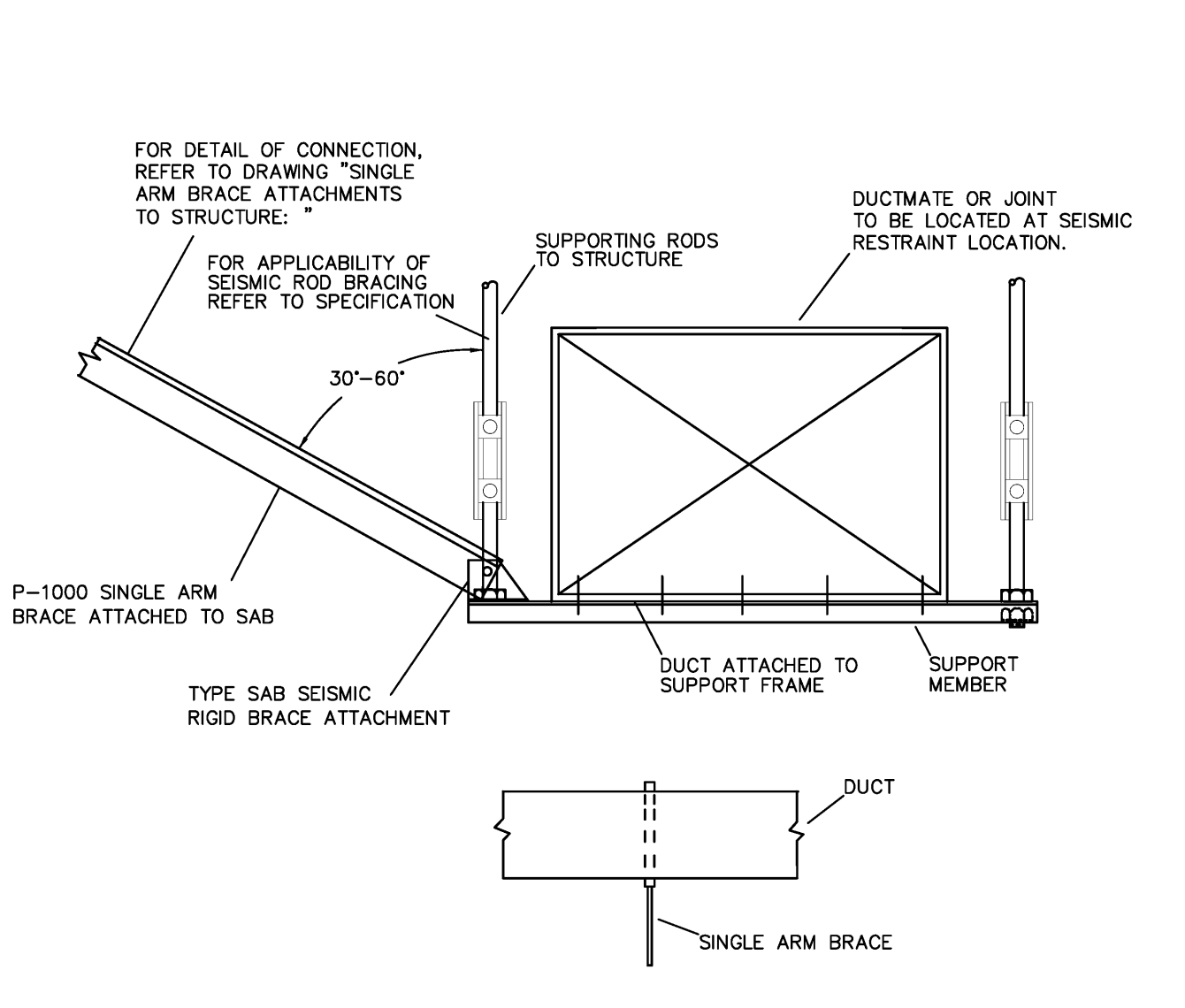
VMC INC. SPEC TYPE - RESTRAINT 17



NOTE: 1. SEE SPECIFICATION FOR CABLE BRACING DISTANCE REQUIREMENTS.

**8** TRANSVERSE AND LONGITUDINAL CABLE BRACE FOR DUCTWORK

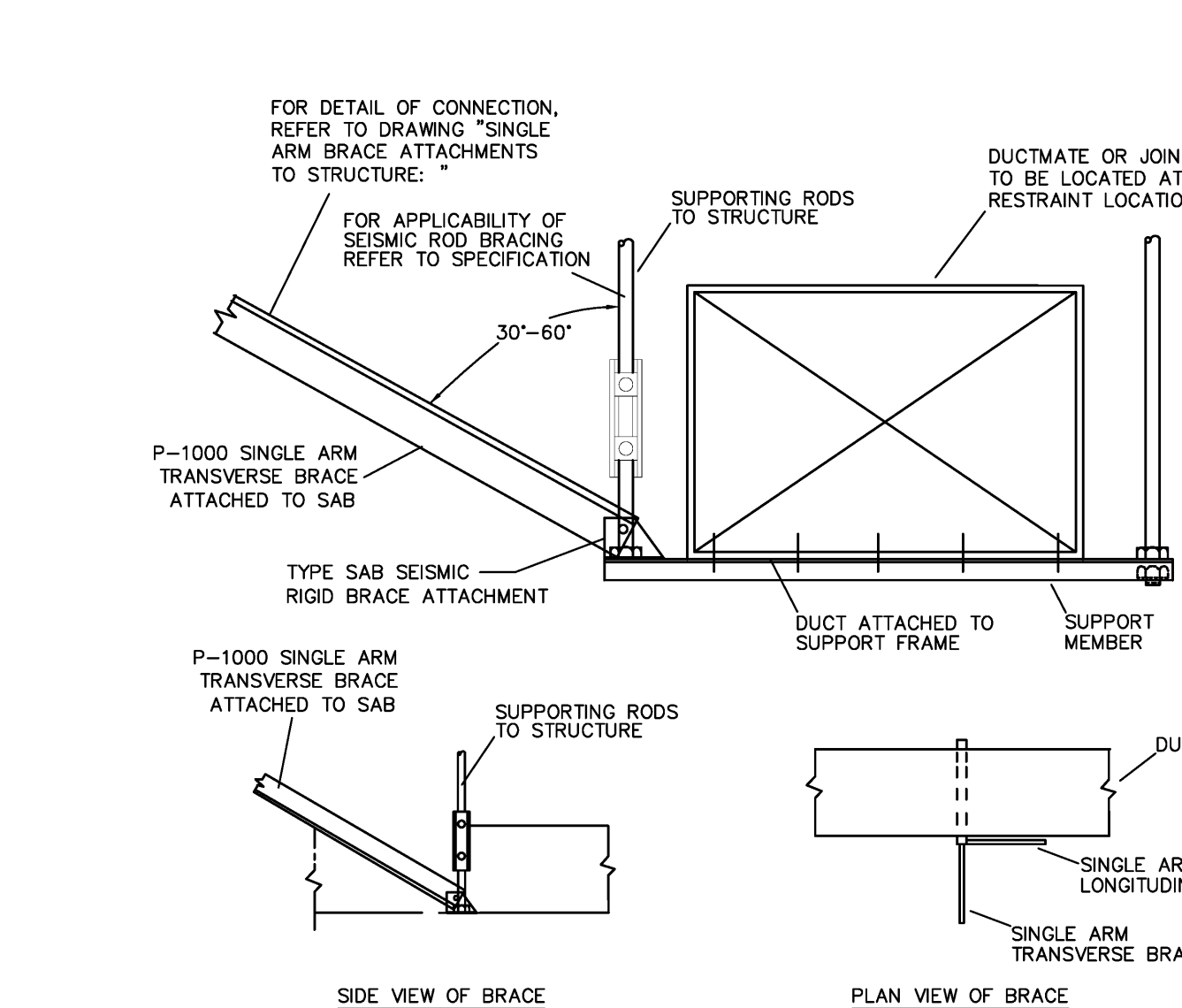
VMC INC. SPEC TYPE - RESTRAINT 17



NOTE: 1. SEE SPECIFICATION FOR RIGID BRACING DISTANCE REQUIREMENTS.  
 NOTE: 2. CANNOT BE USED WITH ISOLATION HANGERS.

**9** TRANSVERSE SINGLE ARM BRACE FOR NETWORK

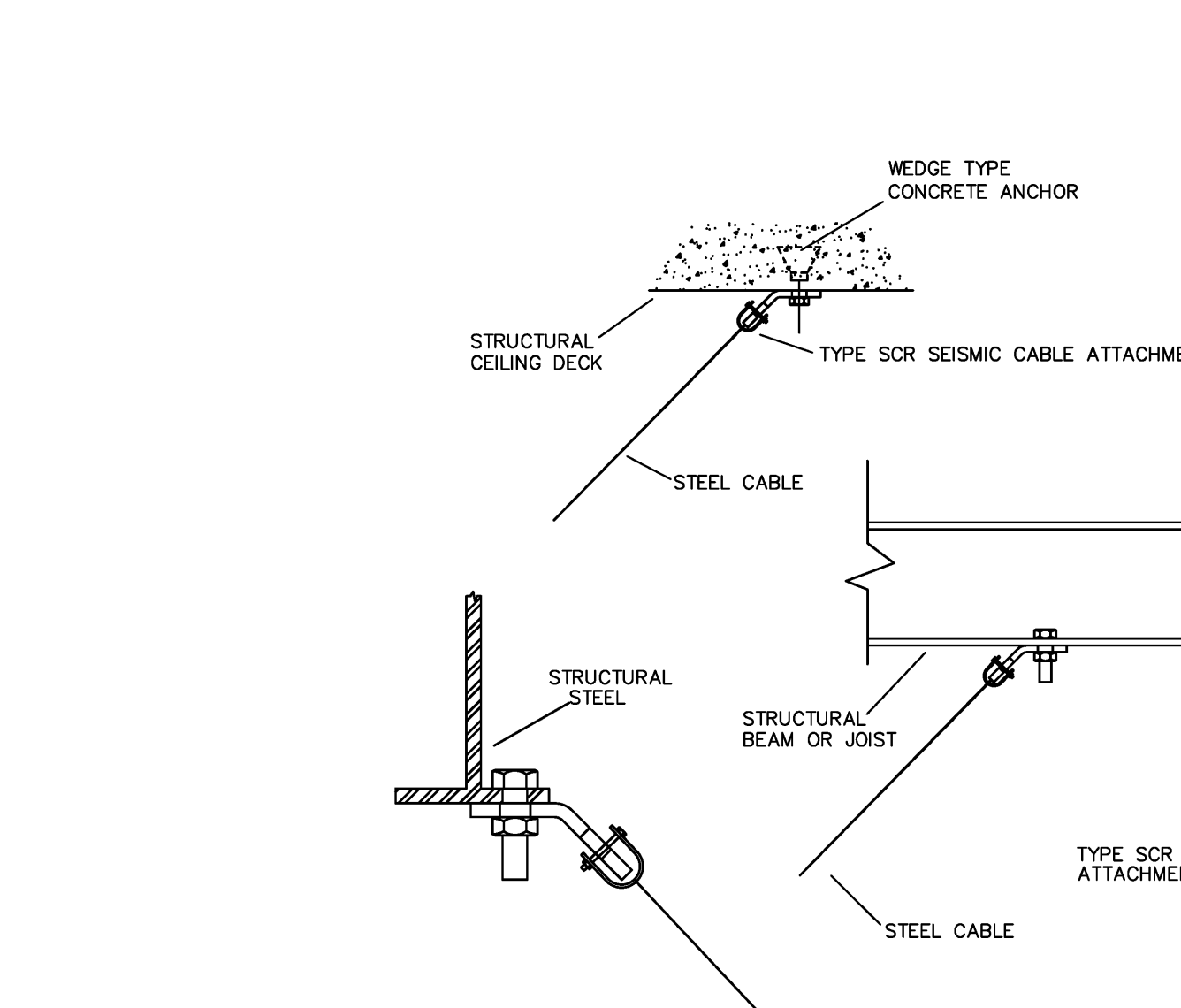
VMC INC. SPEC TYPE - RESTRAINT 17



NOTE: 1. SEE SPECIFICATION FOR RIGID BRACING DISTANCE REQUIREMENTS.  
 NOTE: 2. CANNOT BE USED WITH ISOLATION HANGERS.

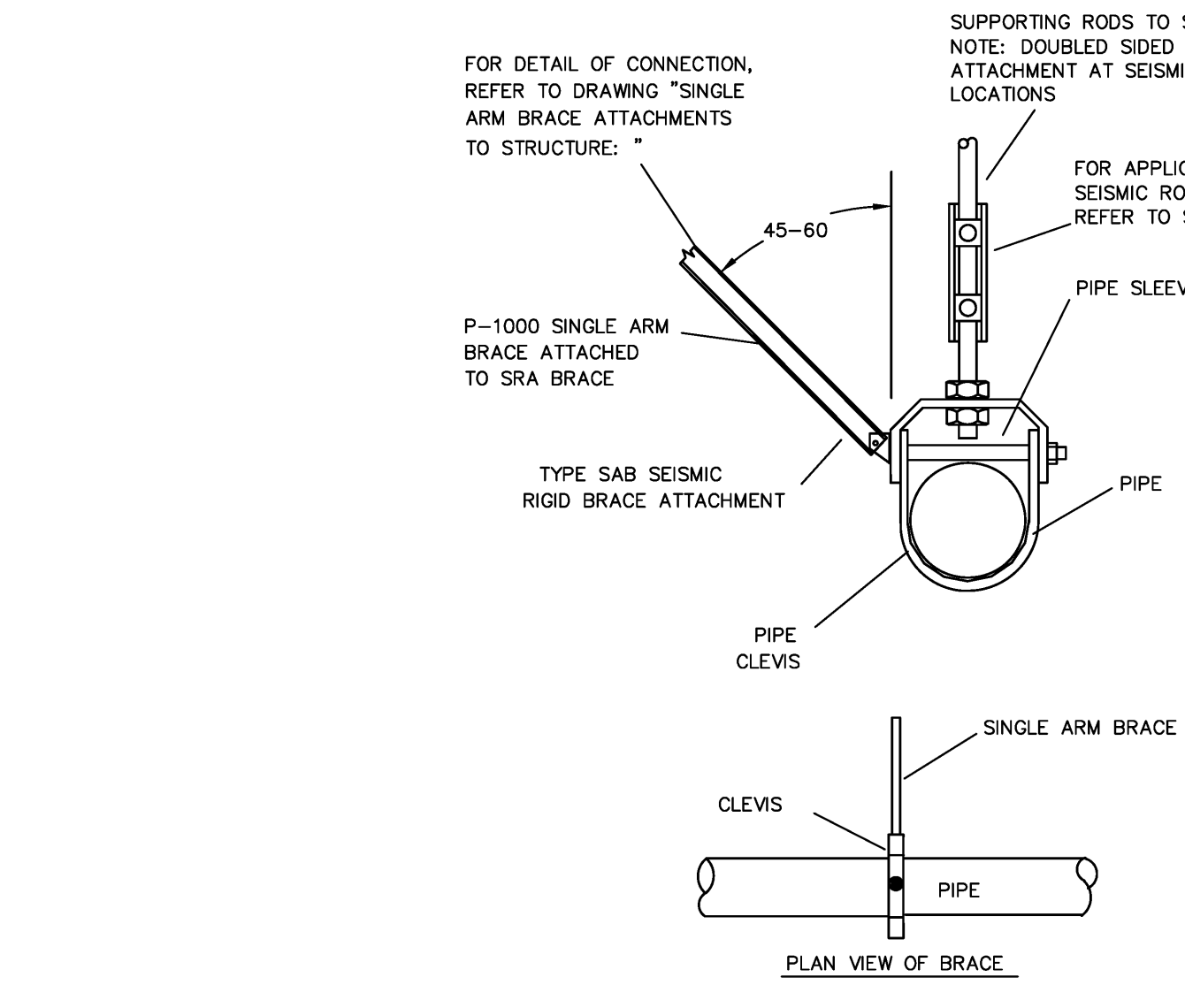
**10** TRANSVERSE AND LONGITUDINAL SINGLE ARM BRACE FOR DUCTWORK

VMC INC. SPEC TYPE - RESTRAINT 17



**11** TYPICAL CABLE OR UNISTRUTS ATTACHMENT TO STRUCTURE

VMC INC. SPEC TYPE - RESTRAINT 17



NOTE: 1. SEE SPECIFICATION FOR RIGID BRACING DISTANCE REQUIREMENTS.  
 NOTE: 2. CANNOT BE USED WITH ISOLATION HANGERS.

**12** TRANSVERSE ARM BRACE FOR CLEVIS HUNG PIPING

VMC INC. SPEC TYPE - RESTRAINT III

NO.	DATE	REVISION
1	11-05-04	PHASE 1 SUBMISSION
2	05-16-05	PHASE 1A REVISIONS
3	10-24-05	90% CONSTRUCTION DOCUMENTS
4	03-10-06	95% CONSTRUCTION DOCUMENTS
5	03-29-06	100% CONSTRUCTION DOCUMENTS

KEY PLAN:

PROJECT TITLE:  
**KEARNY HIGH SCHOOL AIRCRAFT NOISE ABATEMENT PROGRAM AND ADDITION & RENOVATION PROJECT**

DRAWING TITLE:  
**VIBRATION ISOLATION AND SEISMIC DETAILS**

NOTE: WRITTEN SCALE APPLICABLE FOR SHEAR SHEET SIZE ONLY.

PROJECT NO.	2302
DRAWN BY	PR
CHECKED BY	SB
SCALE	NONE
DATE	10.23.08
DRAWING NO.	<b>SGME-1</b>

NEW JERSEY LICENSE # 07554  
 NEW YORK LICENSE # 0140665

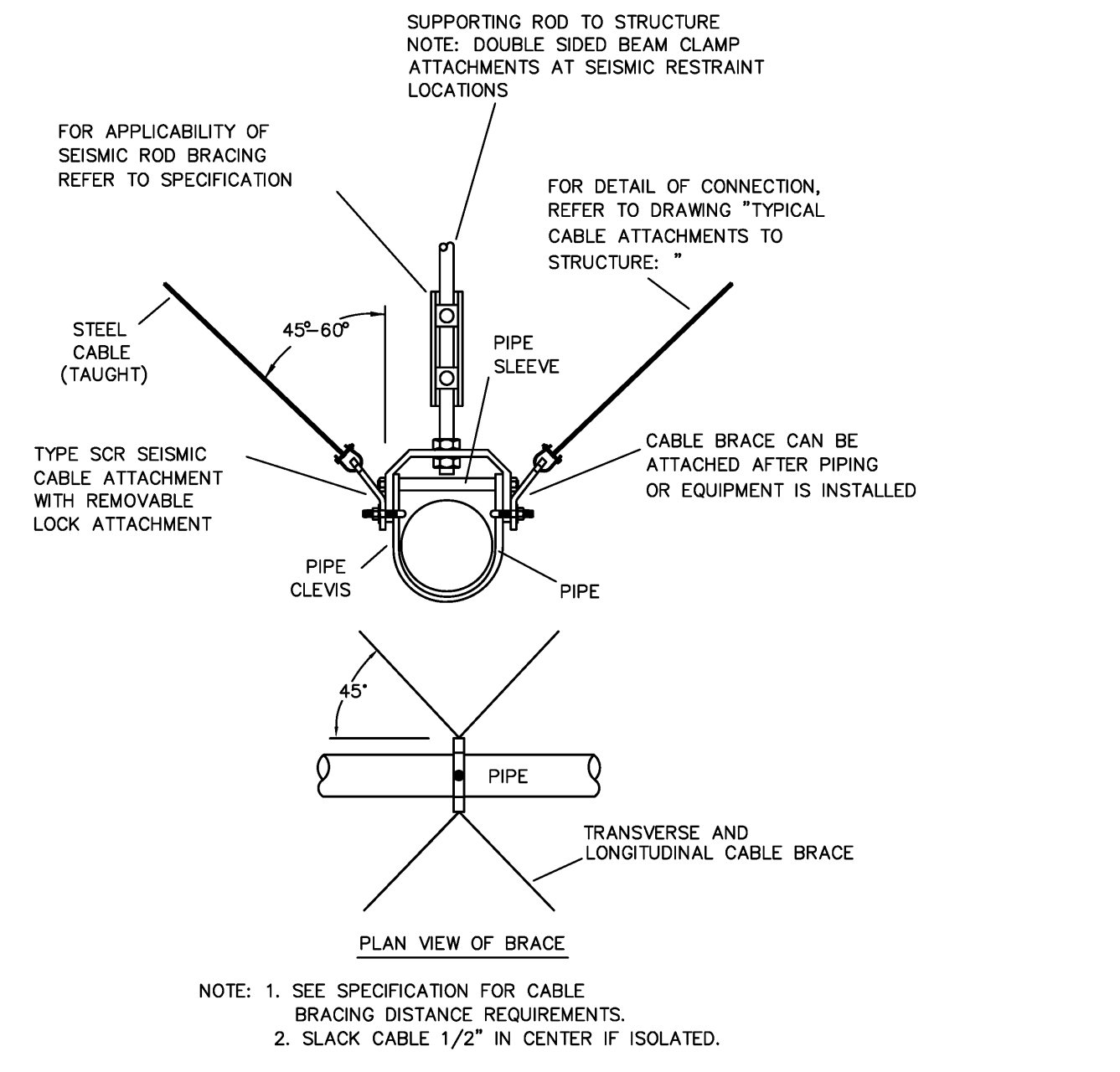
THIS DESIGN IS COPYRIGHTED AND PROTECTED UNDER THE LAWS OF THE UNITED STATES OF AMERICA. ANY UNAUTHORIZED USE OF THIS DOCUMENT WITHOUT WRITTEN CONSENT OF DR. GIBSON ARCHITECTS, P.C. IS PROHIBITED.

© COPYRIGHT 2024 BY DR. GIBSON ARCHITECTS, P.C.

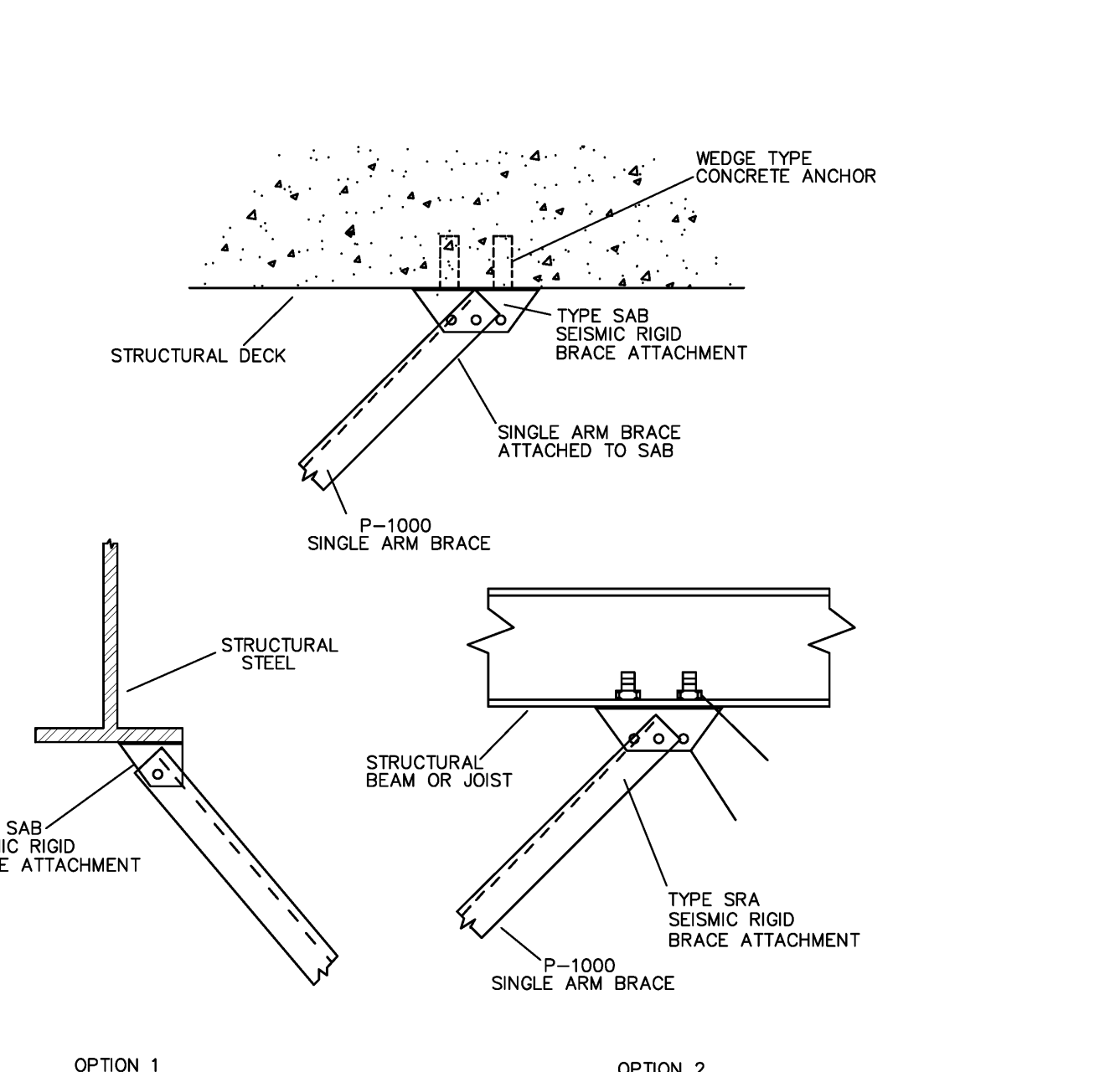
CONSULTANTS:

**A & J CONSULTANTS**  
 644 BRONX ROAD, SUITE 100, LYONS, NY 13024-1413  
 (TEL) 915-777-3608 (FAX) 915-777-5028  
 www.aandj.com

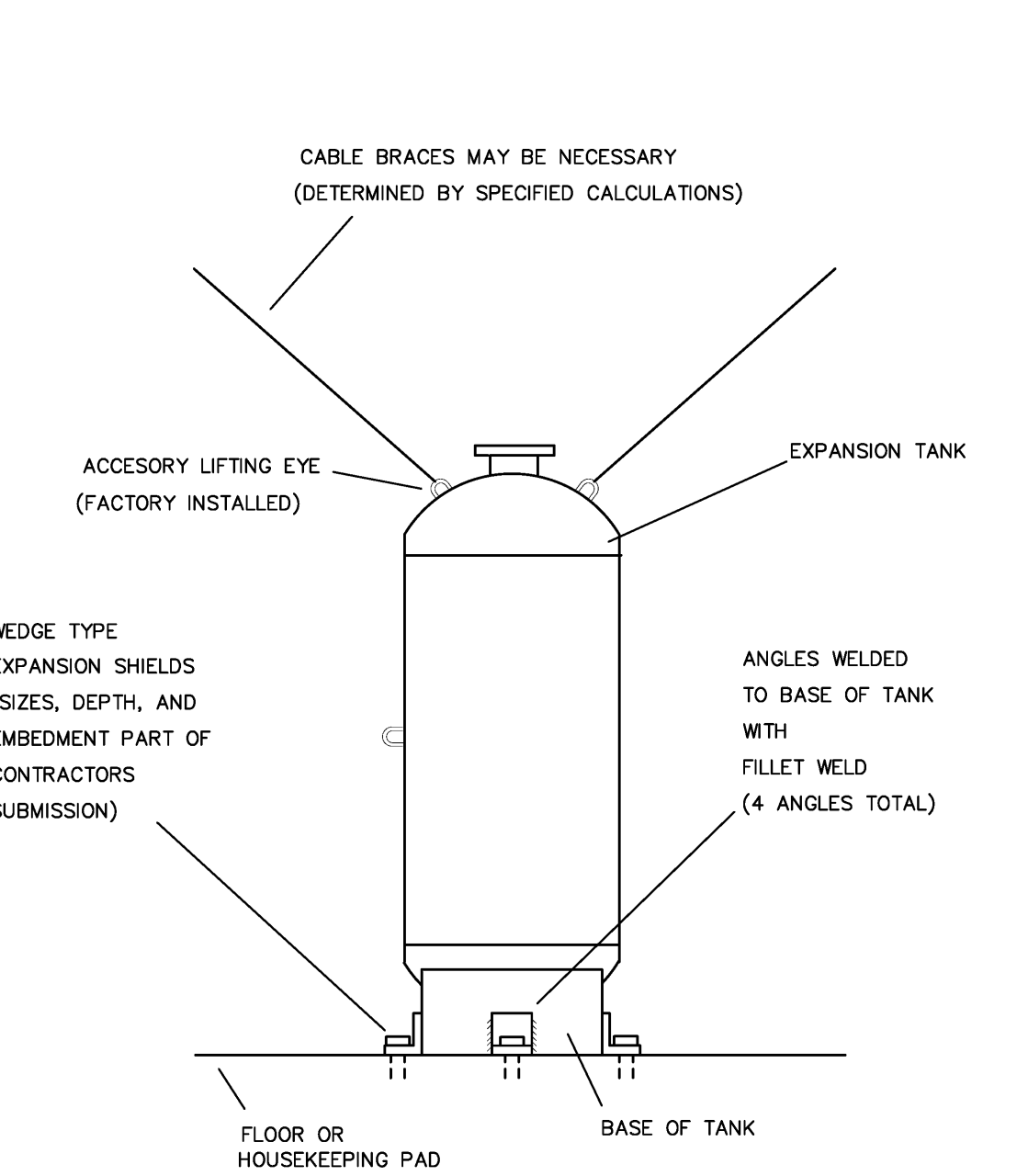
**J. J. J. J.**  
 ATTORNEY AT LAW, NEW YORK, N.Y.



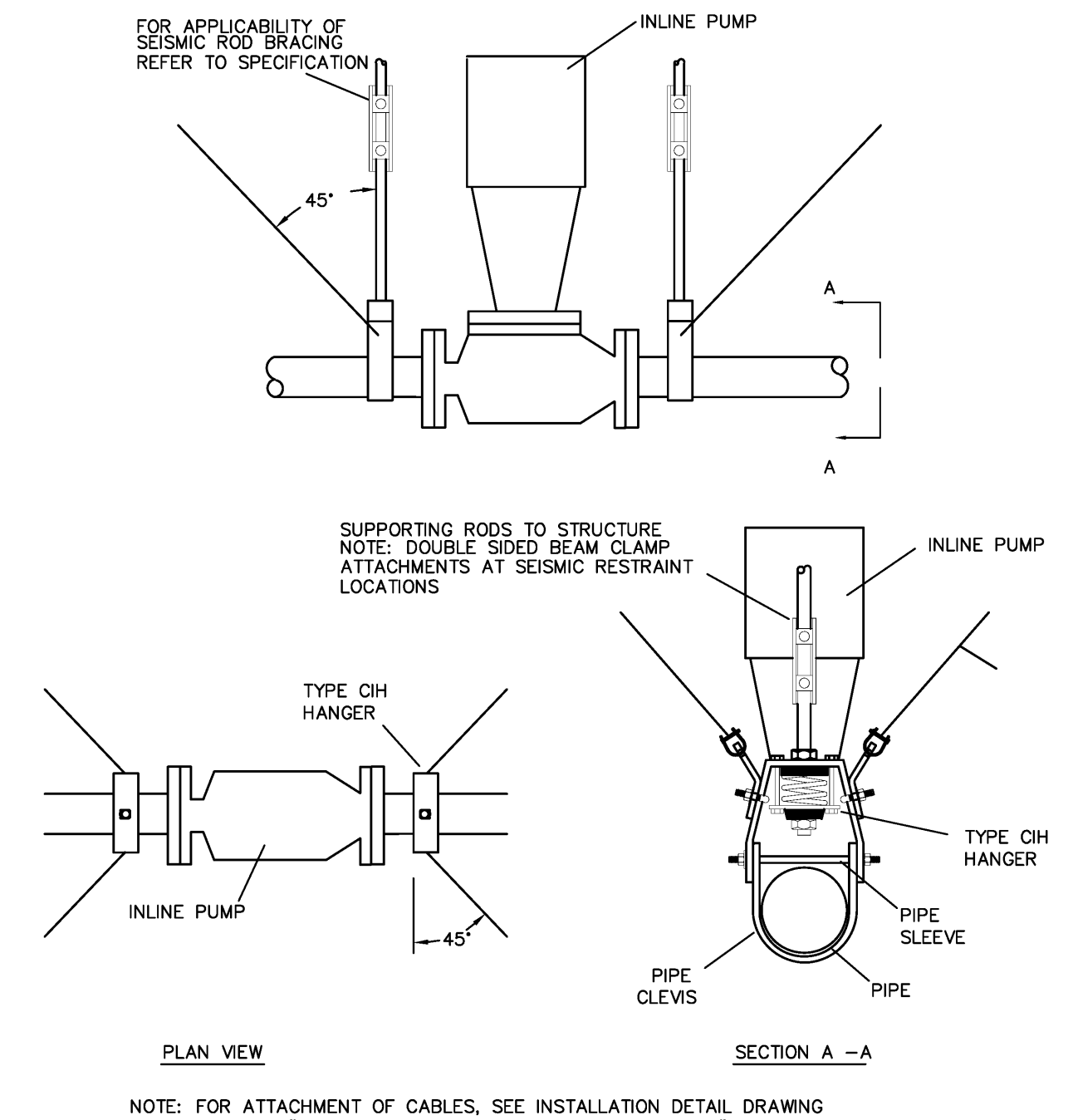
**1** **TRANSVERSE AND LONGITUDINAL CABLE BRACE FOR CLEVIS HUNG PIPING AND CONDUIT**  
 VMC INC. SPEC TYPE - RESTRAINT III



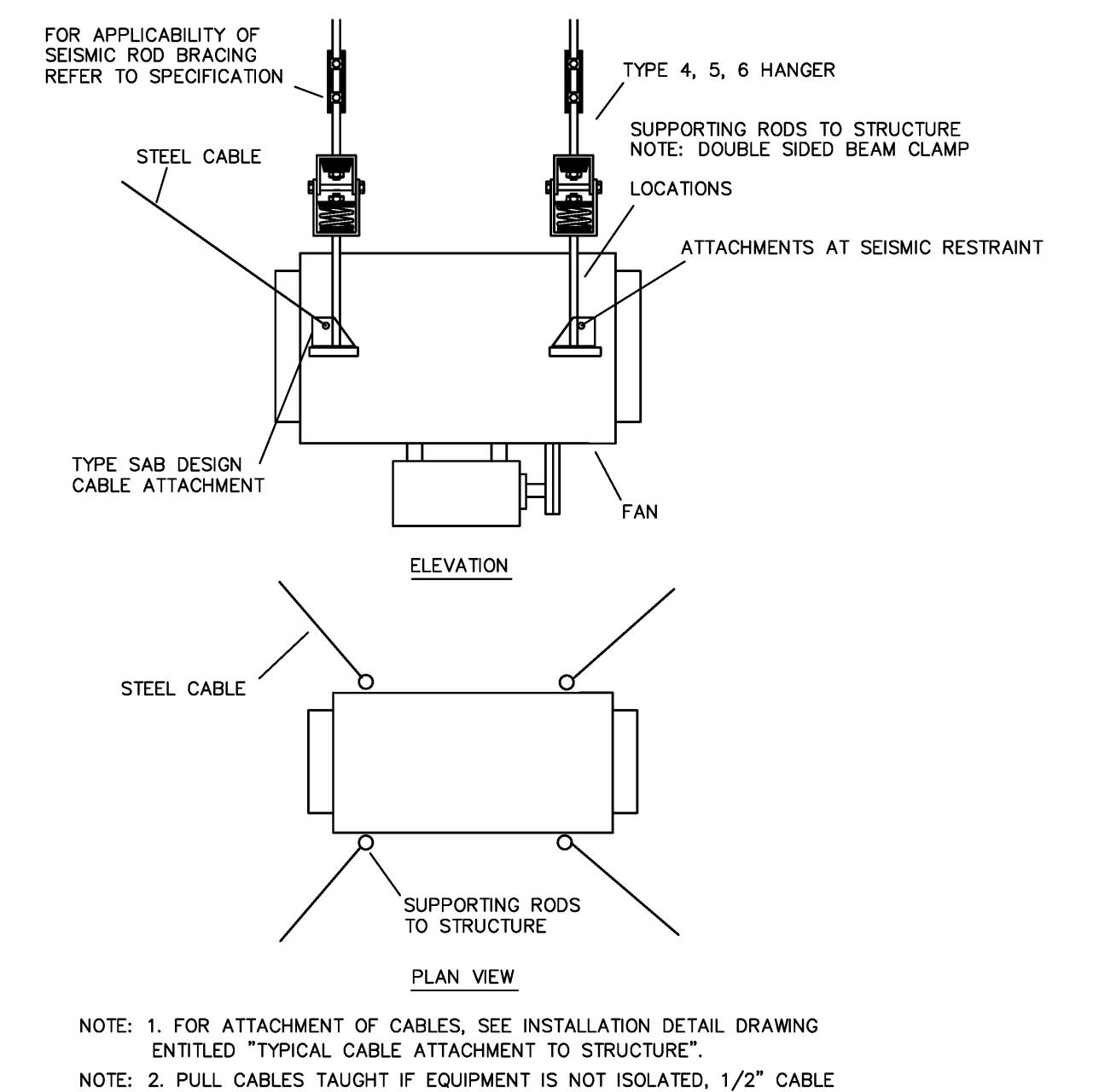
**2** **SINGLE ARM BRACE ATTACHMENTS TO STRUCTURE**  
 VMC INC. SPEC TYPE - RESTRAINT III



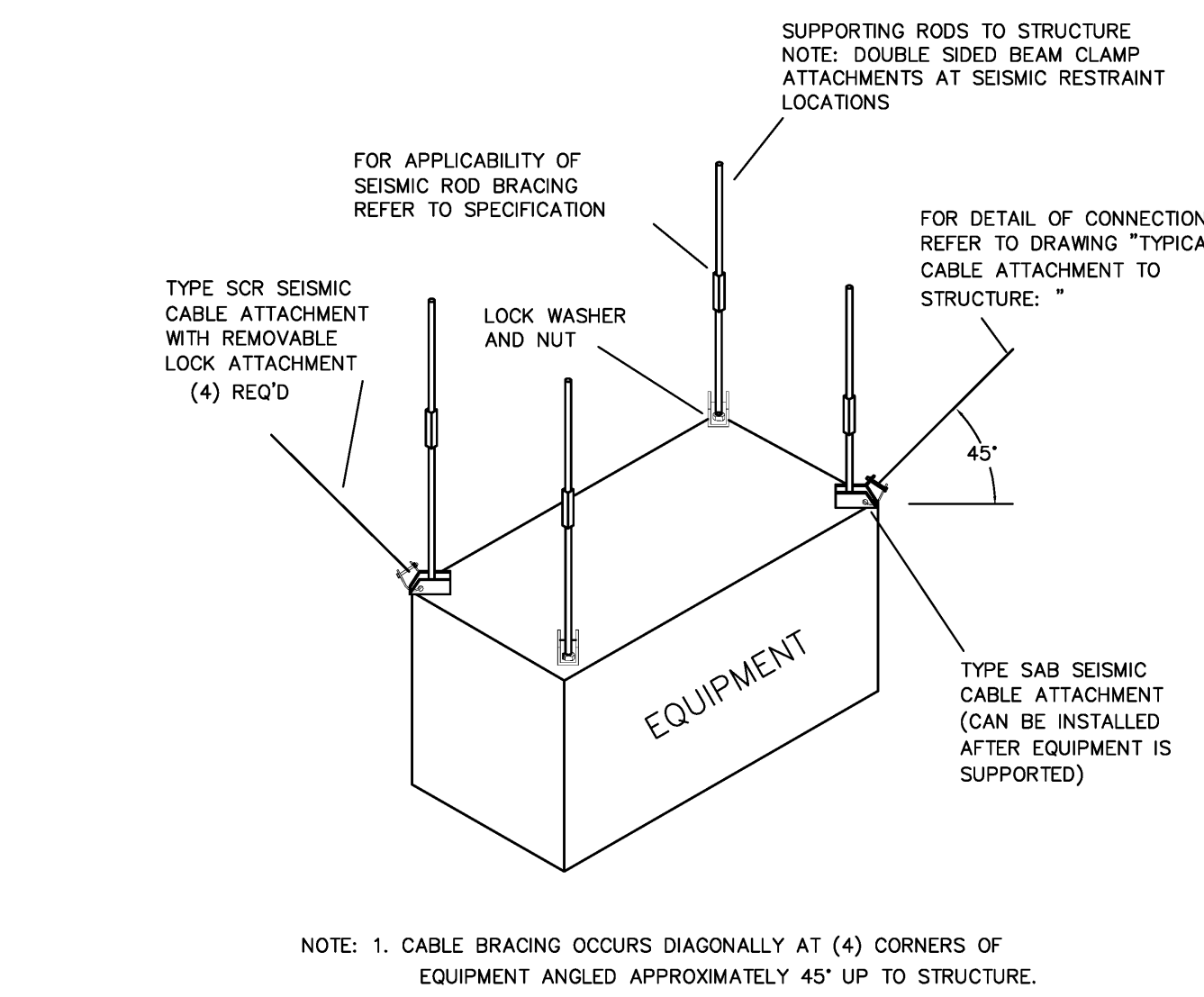
**3** **TYPICAL ANCHORAGE OF VERTICAL EXPANSION TANK**  
 VMC INC. SPEC TYPE - RESTRAINT V



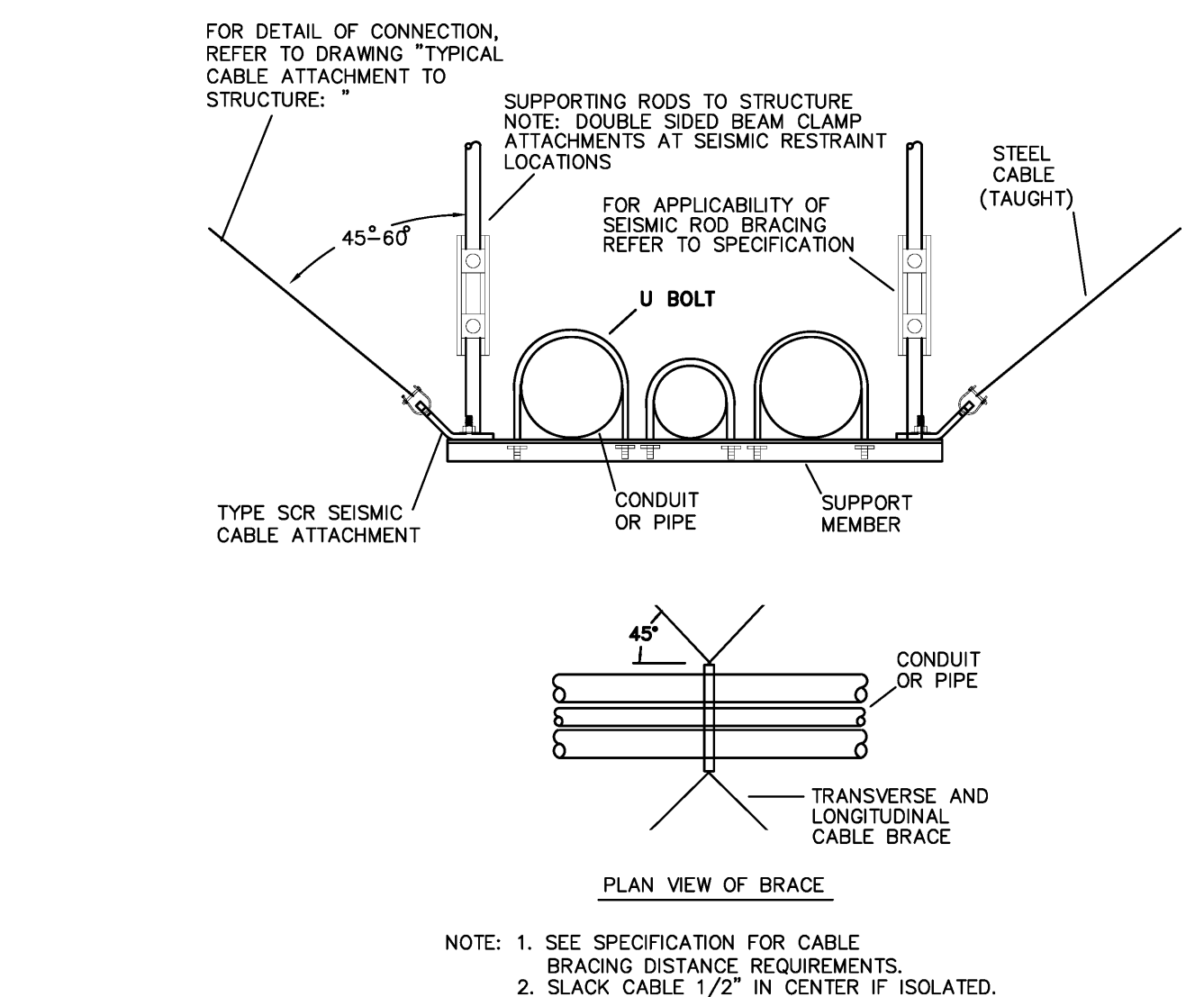
**4** **TYPICAL INSTALLATION OF INLINE PUMP**  
 VMC INC. SPEC TYPE - ISOLATION (4-8); RESTRAINT 17



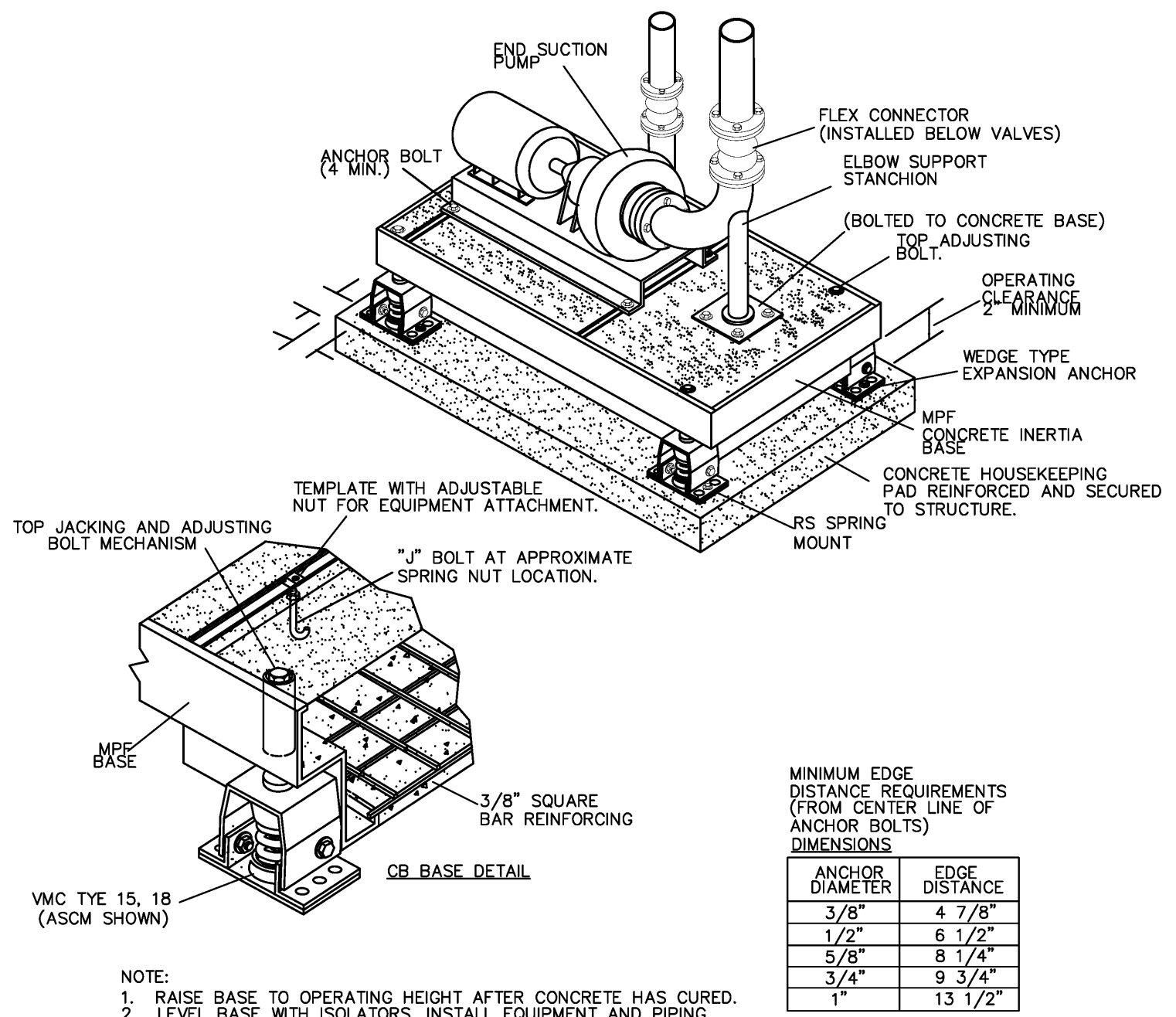
**5** **TYPICAL INSTALLATION OF INLINE FAN**  
 VMC INC. SPEC TYPE - ISOLATION (4, 5, 6); RESTRAINT (17)



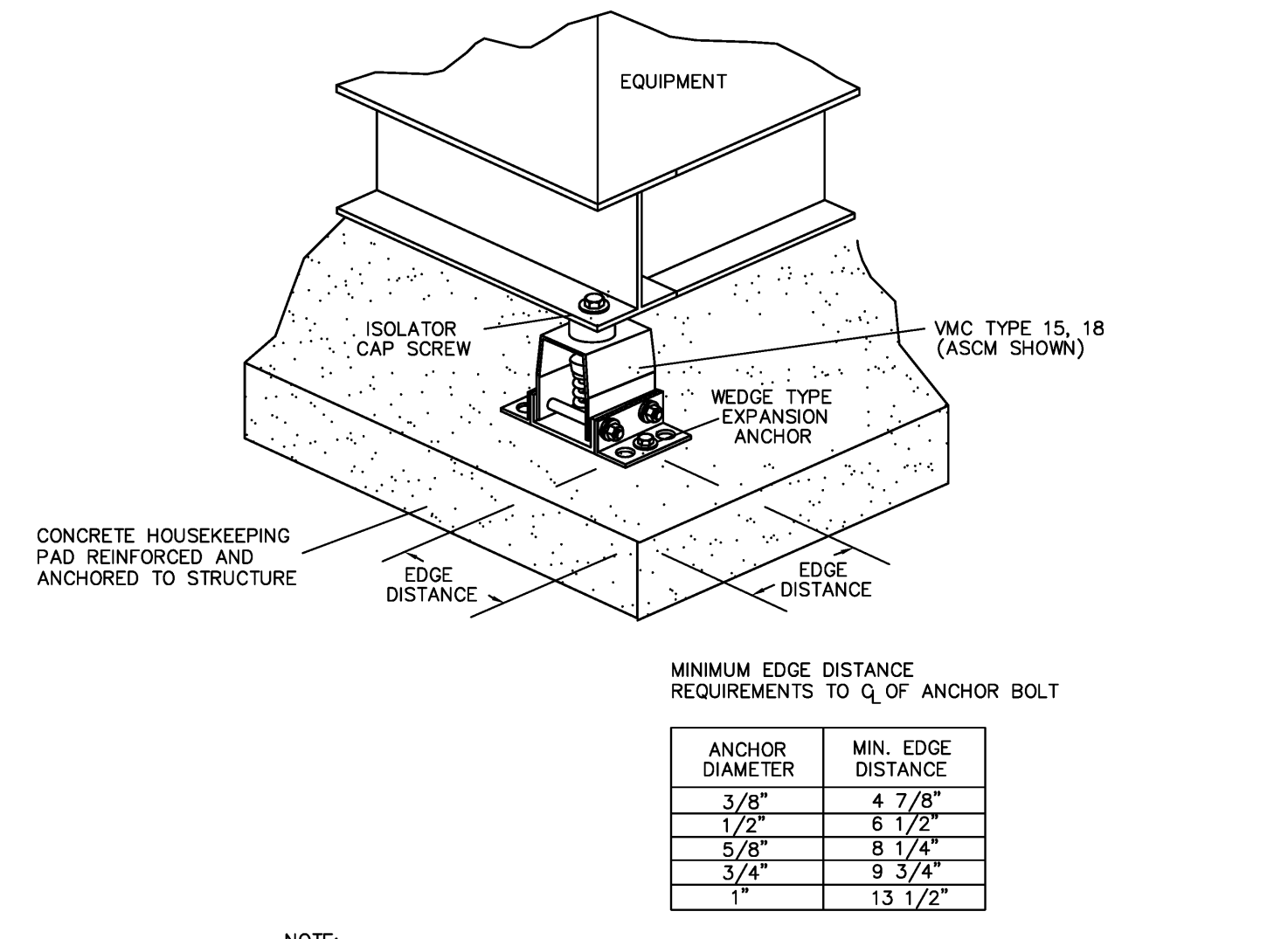
**6** **TYPICAL SEISMIC RESTRAINT OF CEILING HUNG EQUIPMENT**  
 VMC INC. SPEC TYPE - RESTRAINT III



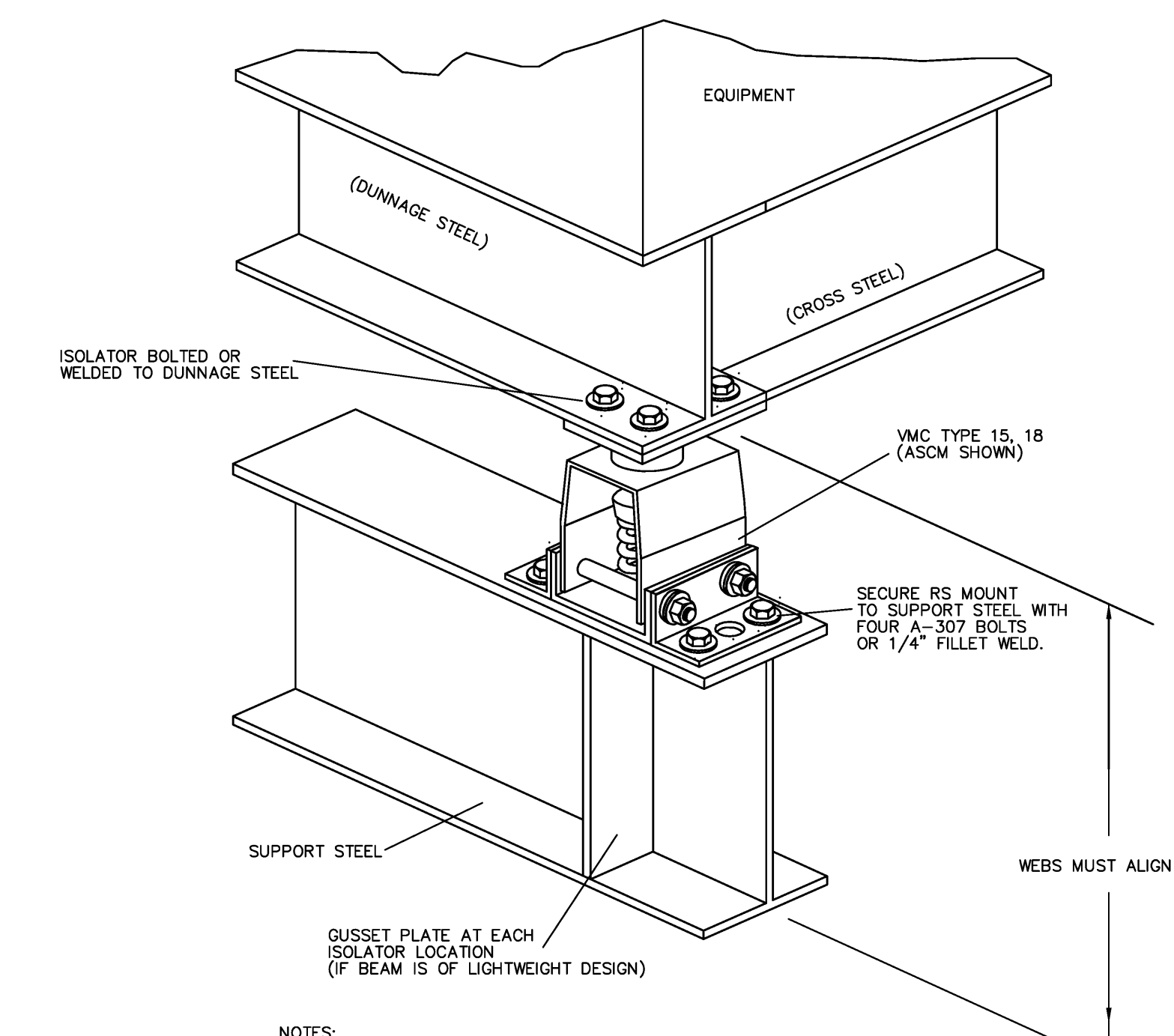
**7** **TRANSVERSE & LONGITUDINAL CABLE BRACE FOR TRAPEZE HUNG PIPE AND CONDUIT**  
 VMC INC. SPEC TYPE - RESTRAINT III



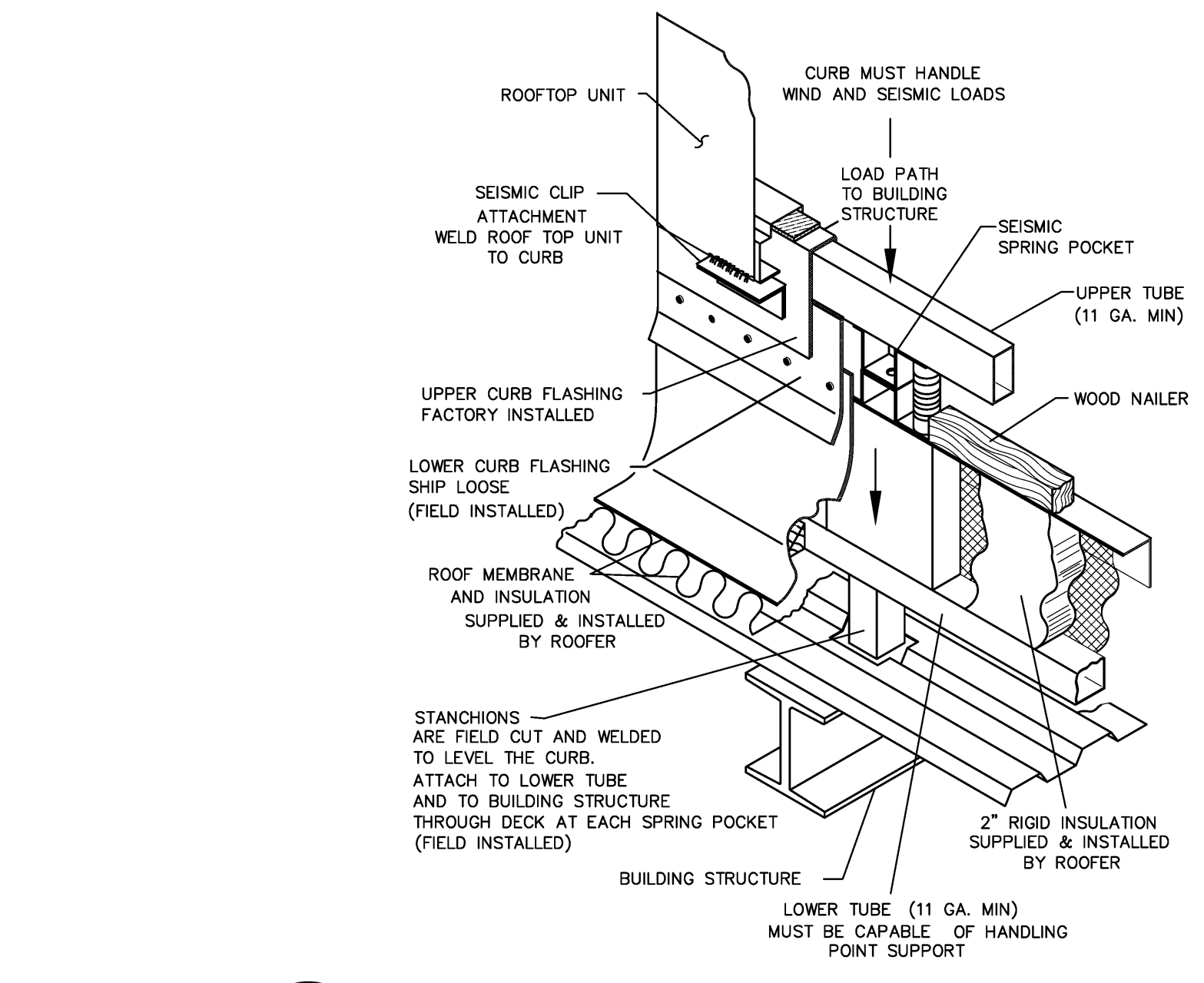
**8** **TYPICAL INSTALLATION PUMP CONCRETE BASE**  
 VMC INC. SPEC TYPE - BASE - (C)  
 ISOLATOR - (15)  
 RESTRAINT - SECTION 3.03



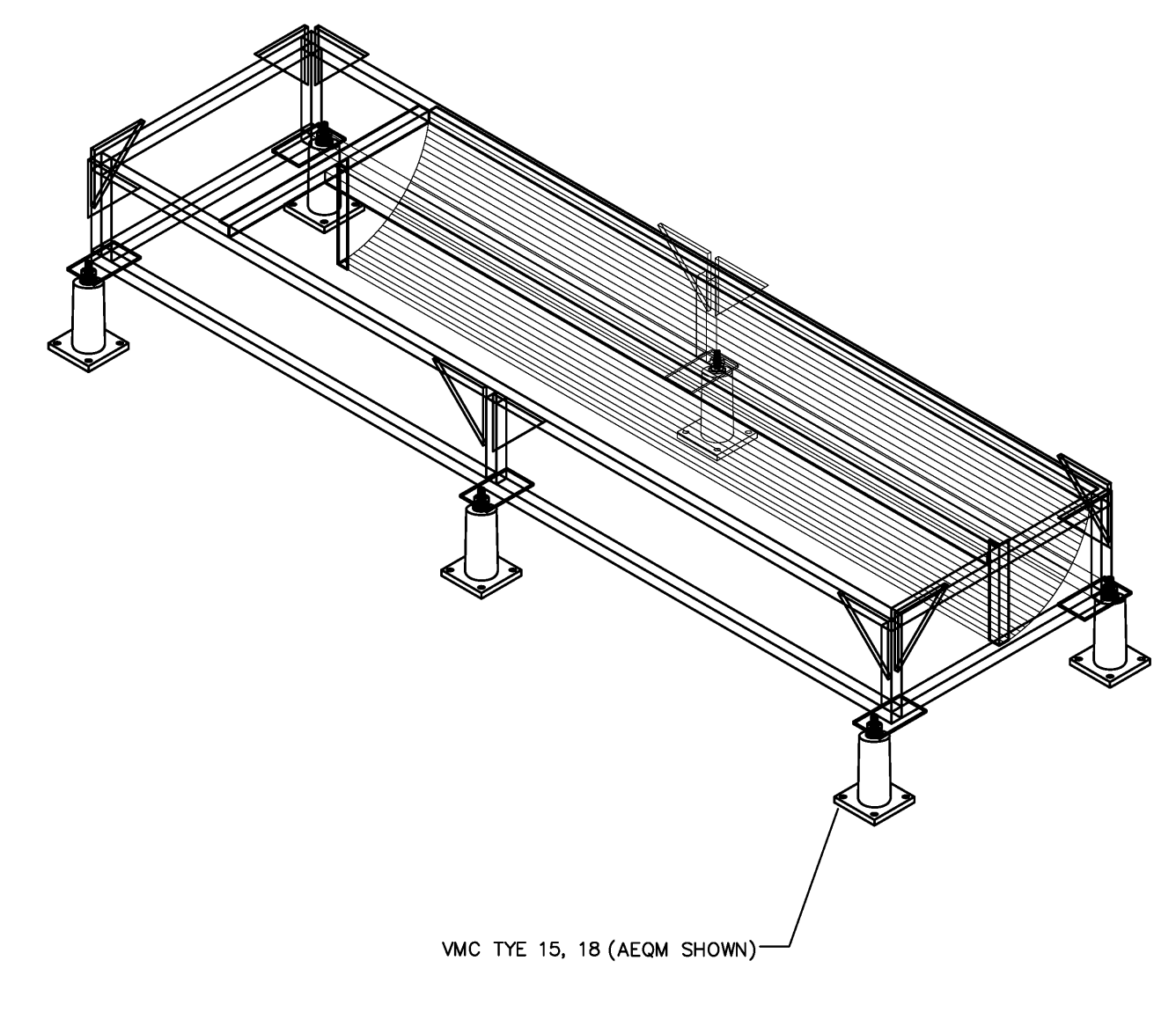
**9** **TYPICAL INSTALLATION OF FLOOR MOUNTED EQUIPMENT**  
 VMC INC. SPEC TYPE - ISOLATOR (15, 18)  
 RESTRAINT (SECTION 3.03)



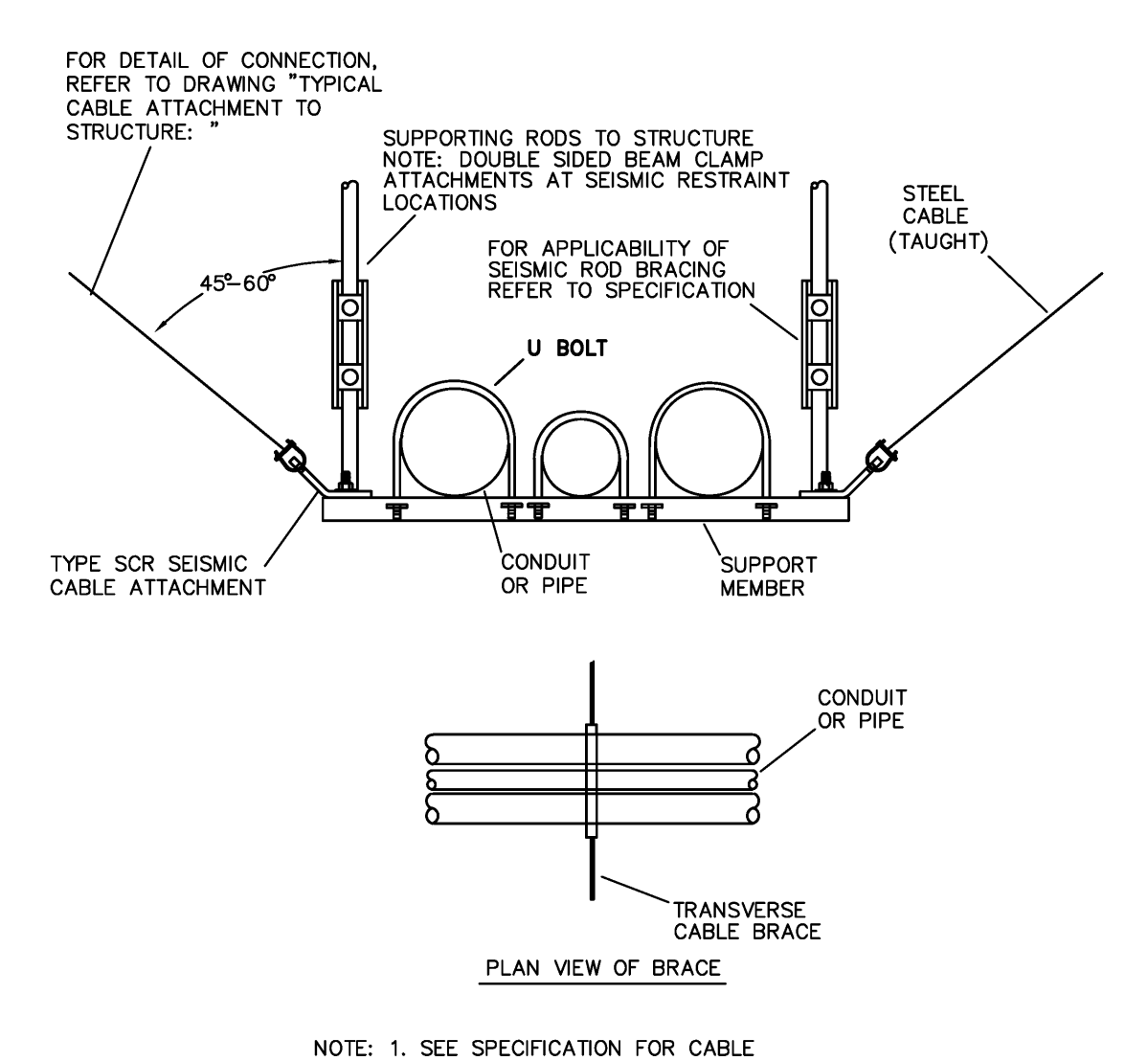
**10** **TYPICAL INSTALLATION OF ROOF MOUNTED EQUIPMENT ON PLATFORMS**  
 VMC INC. SPEC TYPE - ISOLATOR (-B-)  
 RESTRAINT ( )  
 BASE - (SEE SPECS FOR APPLICABILITY)



**11** **INSTALLATION DETAIL OF ROOF CURB OR EQUIPMENT SUPPORTS TO STRUCTURE**  
 VMC INC. SPEC TYPES E & F ISOLATOR BASE W/ RESTRAINT V



**12** **TYPICAL INSTALLATION DETAIL OF FLOOR STAND FOR INDOOR A/C UNITS**  
 VMC INC. SPEC TYPE - G



**13** **TRANSVERSE CABLE BRACE FOR TRAPEZE HUNG PIPE AND CONDUIT**  
 VMC INC. SPEC TYPE - RESTRAINT III

KEY PLAN:

4	08-15-24	ISSUE FOR BID
3	03-20-24	10% CONSTRUCTION DOCUMENTS
4	03-10-24	30% CONSTRUCTION DOCUMENTS
3	10-24-23	50% CONSTRUCTION DOCUMENTS
2	05-16-24	PHASE 1 PA REVISIONS
1	11-05-24	PHASE 1 SUBMISSION
NO.	DATE	ISSUE/SUBMISSION

PROJECT TITLE:  
**KEARNY HIGH SCHOOL:  
 AIRCRAFT NOISE ABATEMENT PROGRAM  
 AND ADDITION & RENOVATION PROJECT**

DRAWING TITLE:  
**VIBRATION  
 ISOLATION AND  
 SEISMIC DETAILS**

NOTE: WRITTEN SCALE APPLICABLE FOR 36x48 SHEET SIZE ONLY

PROJECT NO. 2302  
 DRAWN BY: PR  
 CHECKED BY: SB  
 SCALE: NONE  
 DATE: 10.23.06

DRAWING NO. **SGME-2**  
 A & J PROJECT No. 626