



DEWBERRY-GOODKIND, INC.



JASON LEE
N.Y. Professional Engineer # 081525

| No. | Date | Revision | Approved |
|-----|------|----------|----------|
| | | | |

ENGINEERING DEPARTMENT

GOETHALS
BRIDGE

STRUCTURAL

Title
REHABILITATION OF
ADMINISTRATION BUILDING
CURTAIN WALL

SECOND LEVEL
FLOOR PLAN

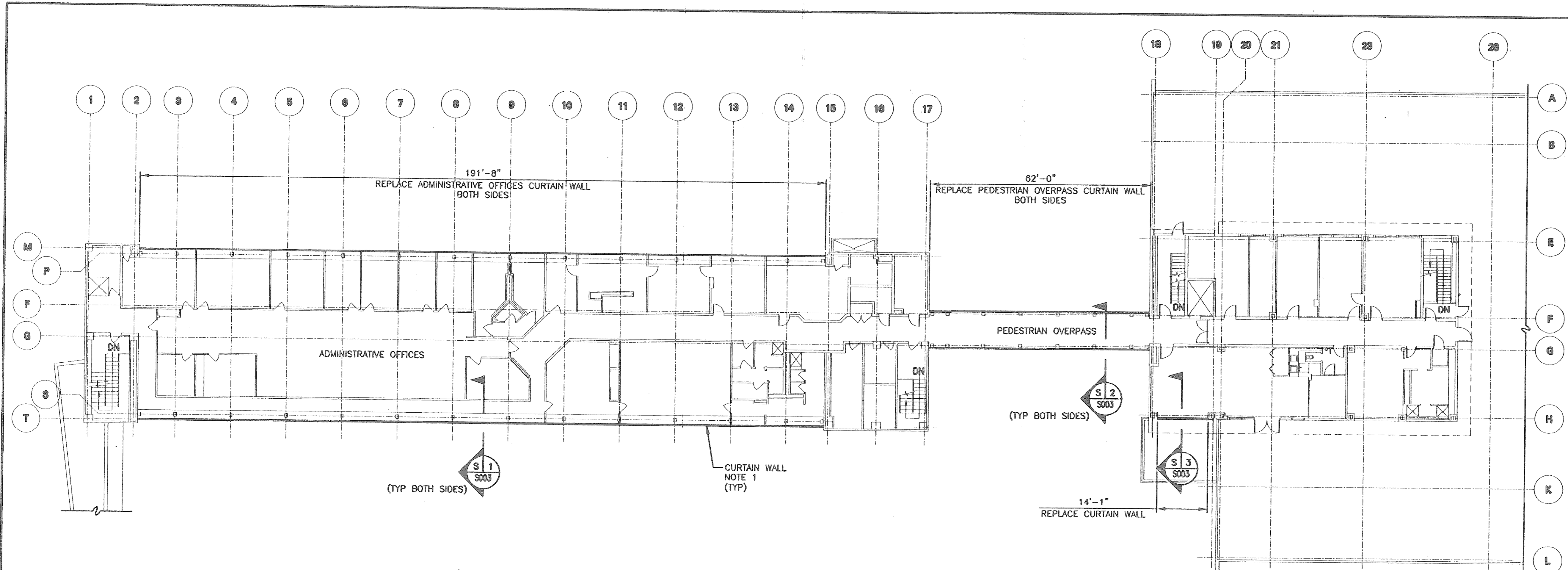
This drawing subject to conditions in contract. All inventions, ideas, designs and methods herein are reserved to Port Authority and may not be used without its written consent. All holders of Contract documents, including bidders and those who do not bid and their prospective subcontractors and suppliers who may receive all or a part of the Contract documents or copies thereof, shall make every effort to ensure the secure and appropriate disposal of the Contract documents to prevent further disclosure of the information contained in the documents. Secure and appropriate disposal includes methods of document destruction such as shredding or arrangements with refuse handlers that ensure that third persons will not have access to the documents' contents either before, during, or after disposal. Documents may also be returned for disposal purposes to the Contract office on the 2nd floor, 3 Gateway Center, Newark, NJ 07102 or the office of the Director of Procurement, One Madison Avenue, 7th Floor, New York, NY 10017.

J.LEE J.LEE T.PETRESHOCK
Designed by Drawn by Checked by

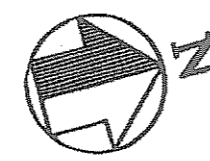
Date 7/14/2010

Contract Number 0
AKG-274.034

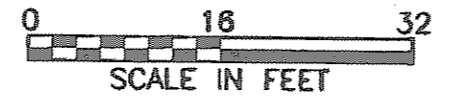
Drawing Number S002
PID# 07481000



NOTE:
1. REFER TO ARCH. DWGS. FOR ADDITIONAL INFORMATION.



SECOND LEVEL PLAN



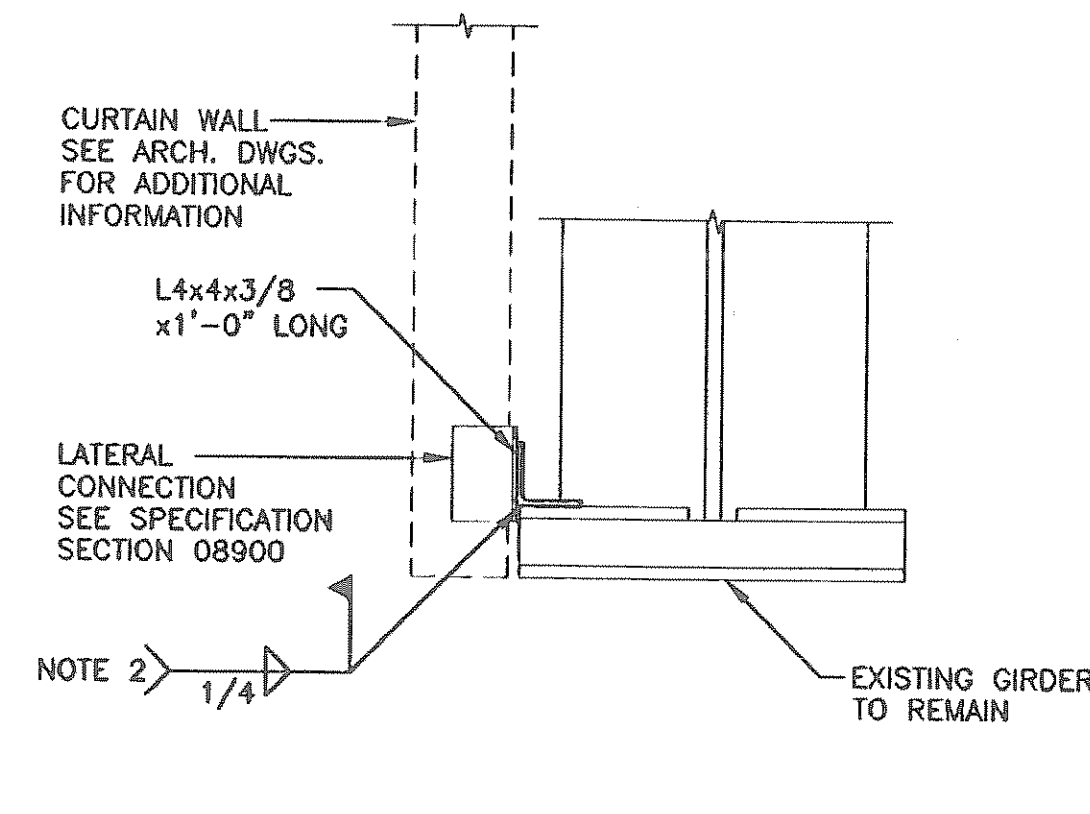
SCALE IN FEET



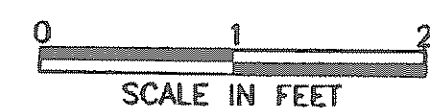
DEWBERRY-GOODKIND, INC.



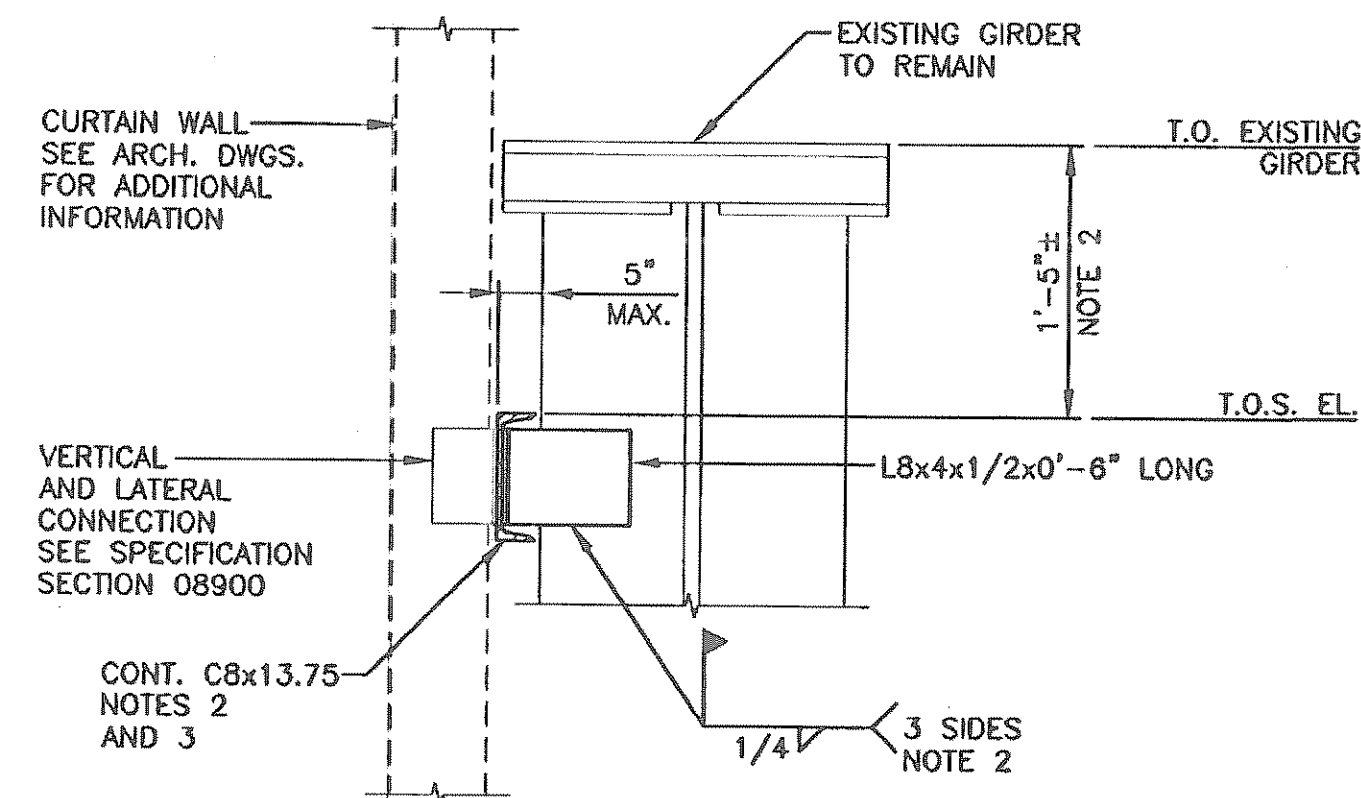
JASON LEE
N.Y. Professional Engineer # 081525



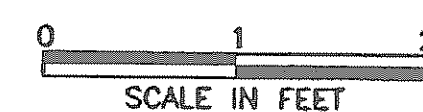
DETAIL A S003



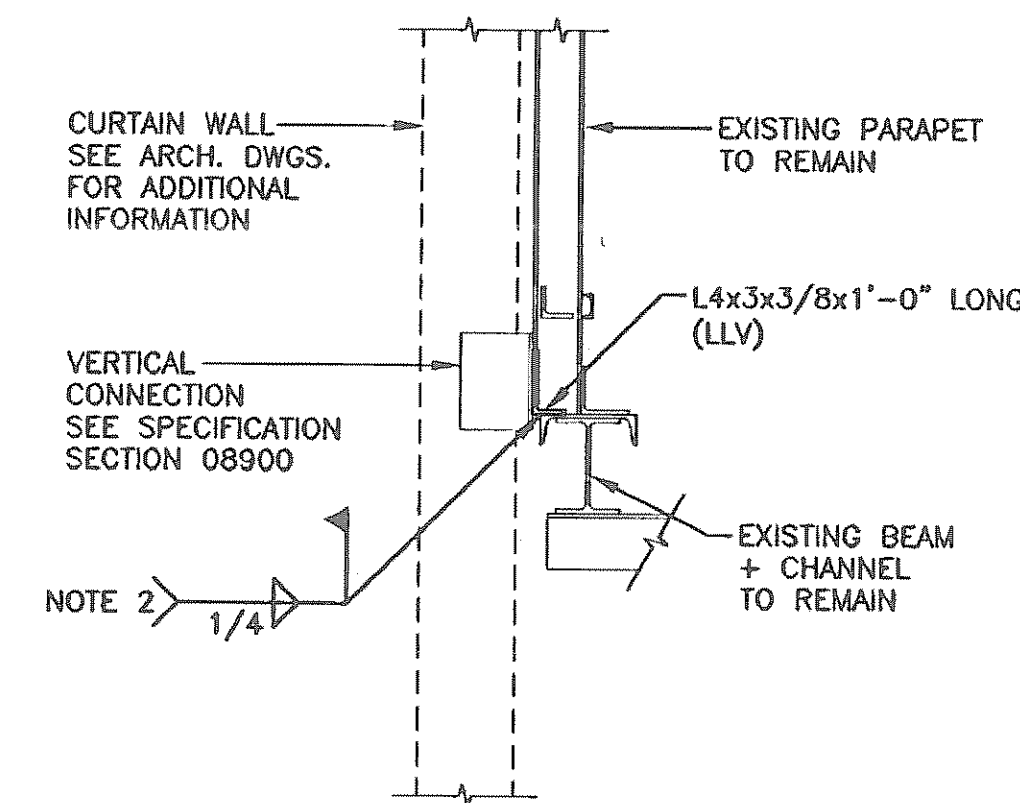
- NOTES:**
1. CEILING NOT SHOWN FOR CLARITY. SEE ARCH. DWGS. FOR ADDITIONAL INFORMATION.
 2. CLEAN AND PREPARE SURFACE OF EXISTING STEEL TO ALLOW FOR WELDING. RESTORE IN KIND EXISTING FIREPROOFING AFTER INSTALLATION.



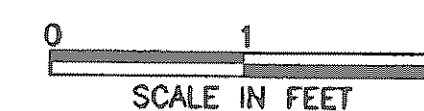
DETAIL B S003



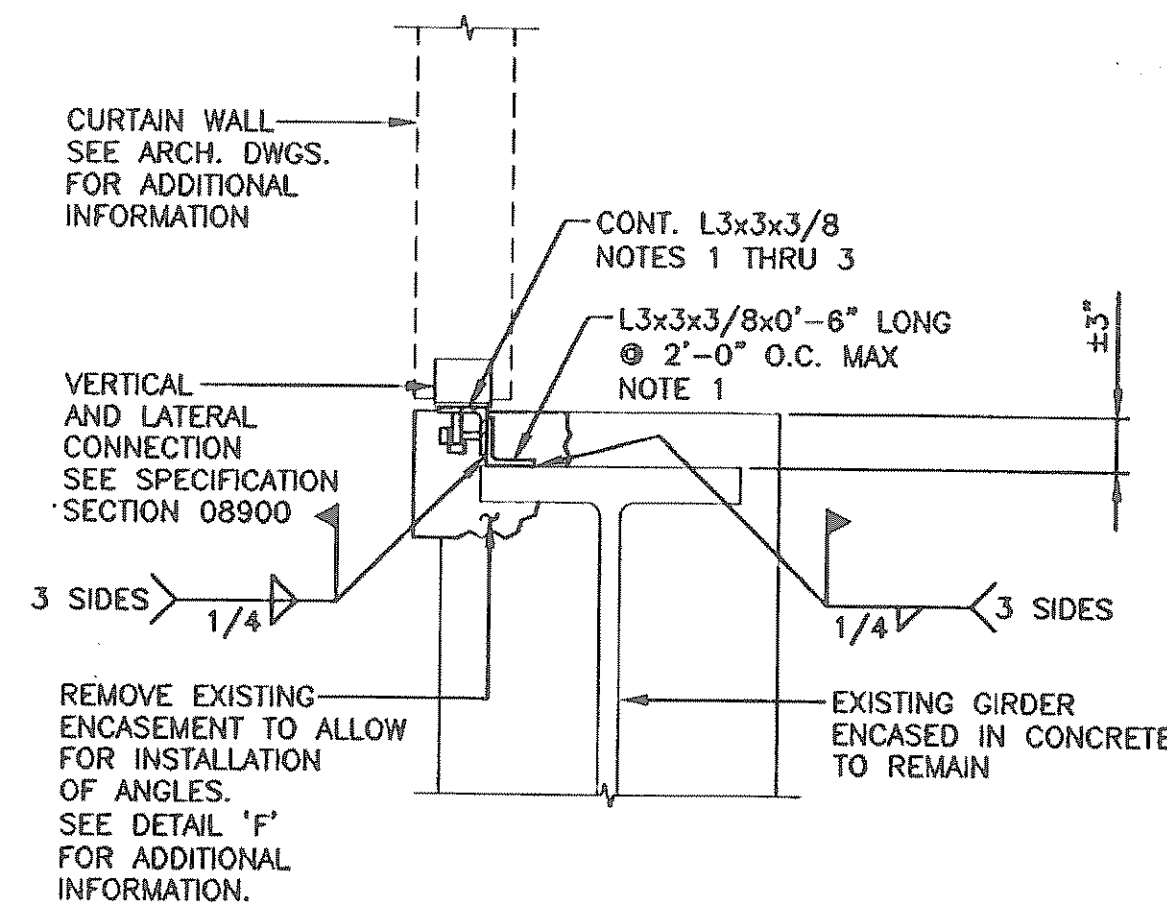
- NOTES:**
1. COORDINATE REMOVAL OF EXISTING CONCRETE SILL, STEEL SUPPORT AND METAL PANEL WITH DWGS. A006 THRU A008.
 2. COORDINATE LOCATION OF CB TO AVOID INTERFERENCE WITH SUPPORT FOR SIGNAGE AND SIGNAL. SEE ARCH. DWGS. FOR ADDITIONAL INFORMATION.
 3. CLEAN AND PREPARE SURFACE OF EXISTING STEEL TO ALLOW FOR WELDING. RESTORE IN KIND EXISTING FIREPROOFING AFTER INSTALLATION.
 4. ATTACH TO L8x4 AT EACH END W/ (2) 3/4" A325-SC BOLTS. OMIT CHANNEL IF NOT REQUIRED.



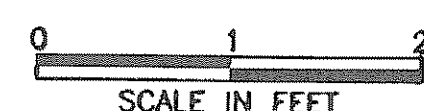
DETAIL C S003



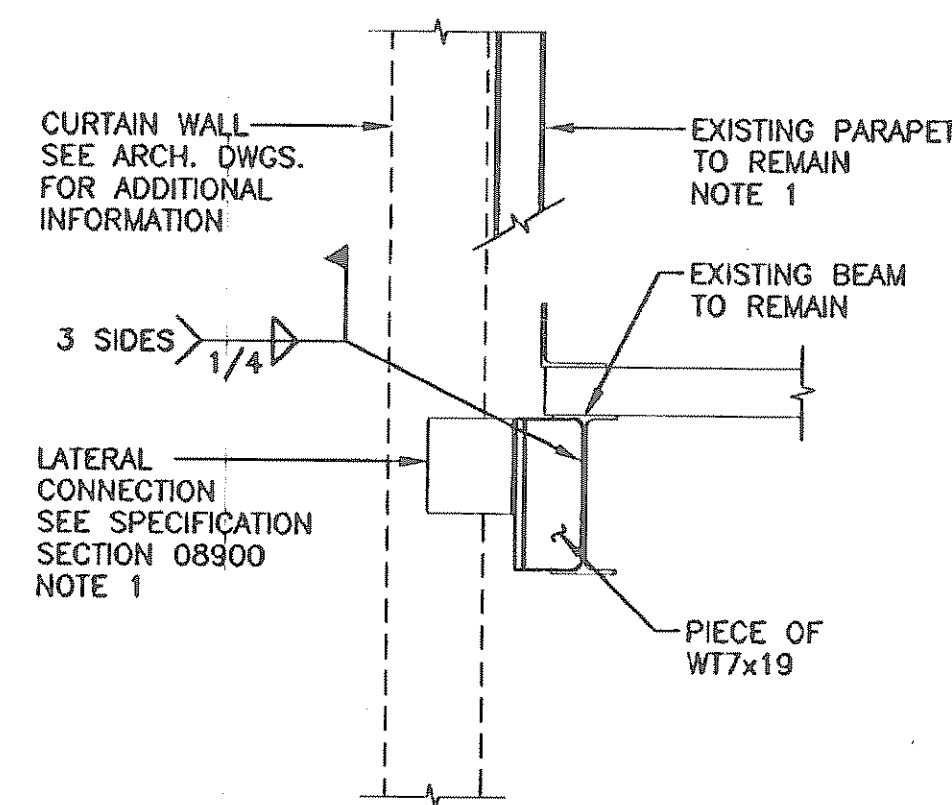
- NOTES:**
1. EXISTING ROOF FRAMING NOT SHOWN FOR CLARITY.
 2. CLEAN AND PREPARE SURFACE OF EXISTING STEEL TO ALLOW FOR WELDING. RESTORE IN KIND EXISTING PAINT OR GALVANIZING AFTER INSTALLATION.



DETAIL D S003



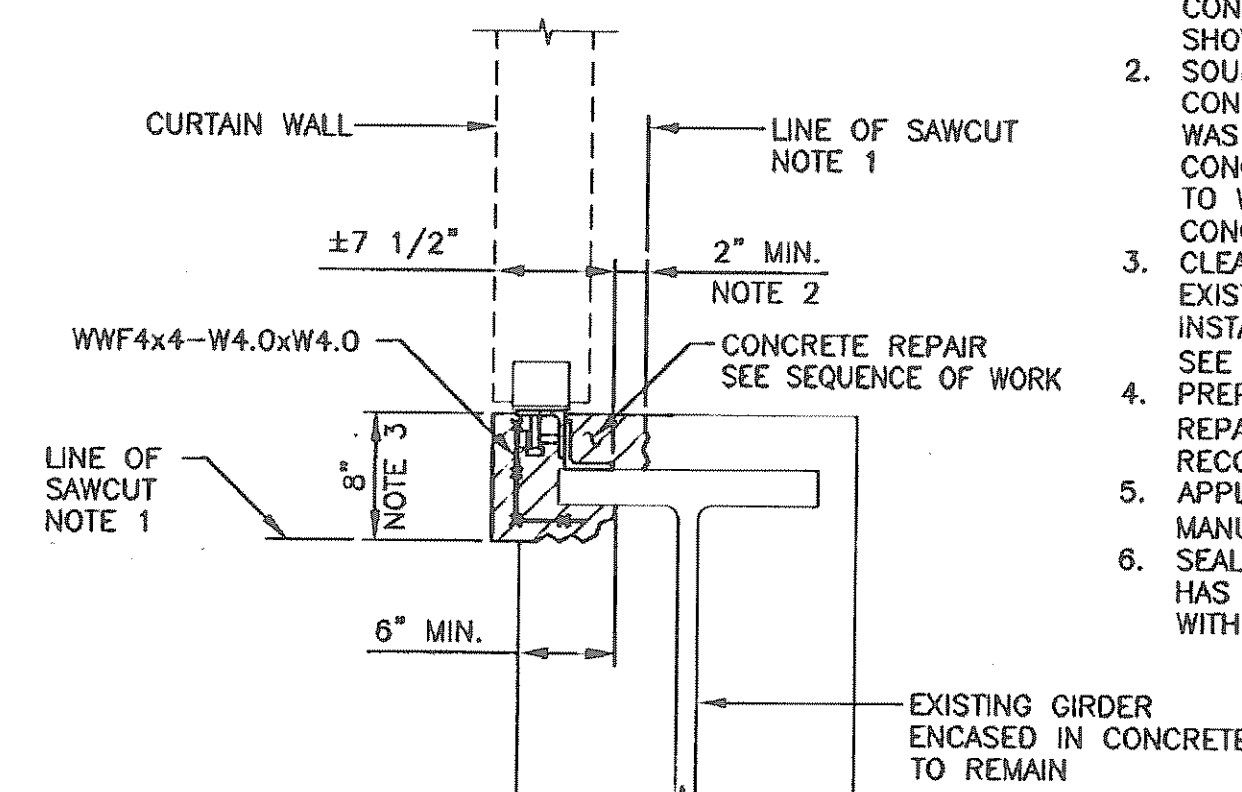
- NOTES:**
1. IF EXISTING ENCASUREMENT IS LESS THAN 3", PROVIDE ANGLES WITH SMALLER VERTICAL LEGS.
 2. SET TOP OF ANGLE 1/4" ABOVE TOP OF EXISTING ENCASUREMENT. PROVIDE SEALANT ON EACH SIDE ALONG LENGTH OF ANGLE - COORDINATE WITH ARCH. DWGS.
 3. PROVIDE 1/2" x 0'-2" LONG HEADED STUD AT 2'-0" O.C. MAX. STAGGERED ON HORIZONTAL AND VERTICAL LEGS.



DETAIL E S003



- NOTE:**
1. COORDINATE LOCATIONS OF VERTICAL MULLIANS WITH LOCATION OF EXISTING PARAPET STEEL TO AVOID INTERFERENCE.



DETAIL F S003



- NOTES:**
1. SAWCUT EXISTING ENCASUREMENT A MAXIMUM DEPTH OF 1". REMOVE EXISTING CONCRETE TO LIMITS SHOWN.
 2. LOCATE SAWCUT LINE ALONG EXISTING JOINT TO MINIMIZE DAMAGE TO EXISTING TILE. COORDINATE WITH ARCH. DWGS.
 3. COORDINATE WITH ARCH. DWGS. FOR COLOR AND PATTERN OF CONCRETE.

SEQUENCE OF WORK:

1. SAWCUT AND REMOVE EXISTING CONCRETE ENCASUREMENT TO LIMITS SHOWN.
2. SOUND EXISTING CONCRETE AND CONFIRM ALL DETERIORATED CONCRETE WAS REMOVED. REMOVE ADDITIONAL CONCRETE AS REQUIRED. ENGINEER TO WITNESS SOUNDING OF EXISTING CONCRETE.
3. CLEAN AND PREPARE SURFACE OF EXISTING STEEL GIRDER FOR WELDING. INSTALL STEEL ANGLES - SEE DETAIL 'D'.
4. PREPARE CONCRETE SURFACE AS PER REPAIR MORTAR MANUFACTURER'S RECOMMENDATIONS. INSTALL WWF.
5. APPLY REPAIR MORTAR AS PER MANUFACTURER'S INSTRUCTIONS.
6. SEAL ALL JOINTS AFTER REPAIR MORTAR HAS PROPERLY CURED. COORDINATE WITH ARCH. DWGS.

| No. | Date | Revision | Approved |
|-----|------|----------|----------|
| | | | |

ENGINEERING DEPARTMENT

GOETHALS BRIDGE

STRUCTURAL

Title
REHABILITATION OF ADMINISTRATION BUILDING CURTAIN WALL

DETAILS

This drawing subject to conditions in contract. All inventions, ideas, designs and methods herein are reserved to Port Authority and may not be used without its written consent. All registrars of Contract documents, including bidders and those who do not bid and their prospective subcontractors and suppliers who may receive all or part of the Contract documents or copies thereof, shall make every effort to ensure the secure and appropriate disposal of the Contract documents to prevent further disclosure of the information contained in the documents. Secure and appropriate disposal includes methods of document destruction such as shredding or incineration with refuse handlers that ensure that third persons will not have access to the documents' contents after sale, during or after disposal. Documents may also be returned for disposal purposes to the Contract Desk on the 5th Floor, 3 Gateway Center, Newark, NJ 07102 or the office of the Director of Procurement, One Madison Avenue, 7th Floor, New York, NY 10017.

J.LEE J.LEE T.PETRESHOCK
Designed by Drawn by Checked by

Date 7/14/2010

Contract Number 0
AKG-274.034

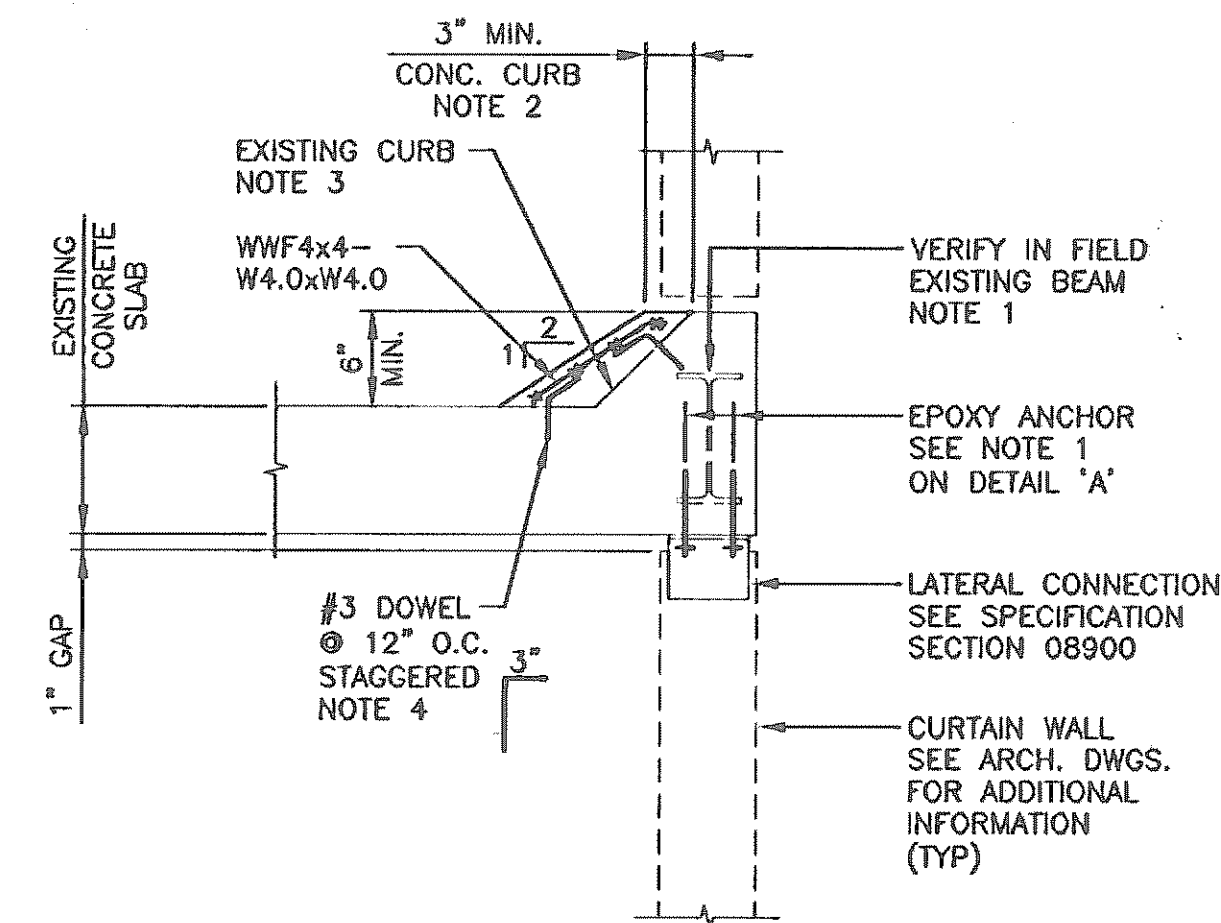
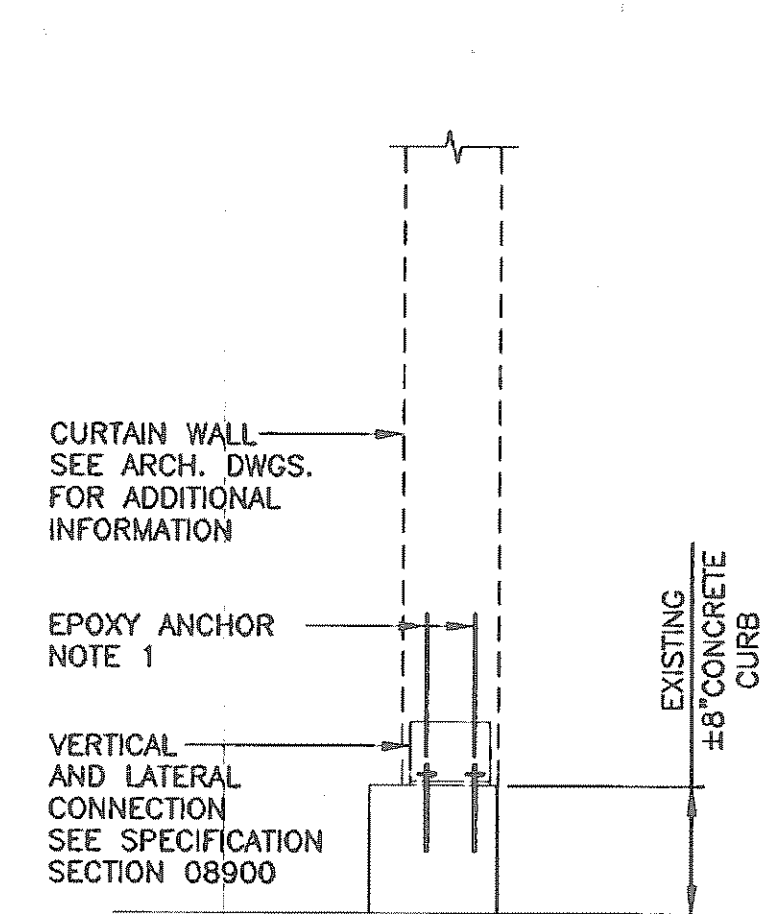
Drawing Number S004
PID# 07481000



DEWBERRY-GOODKIND, INC.

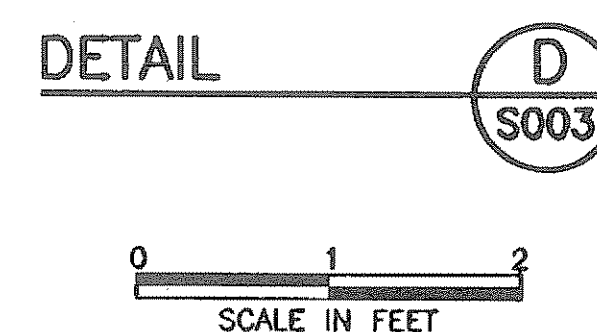
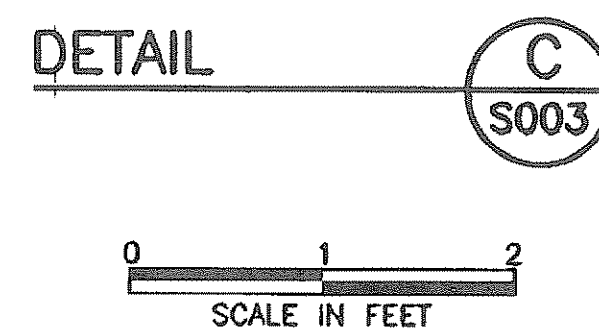
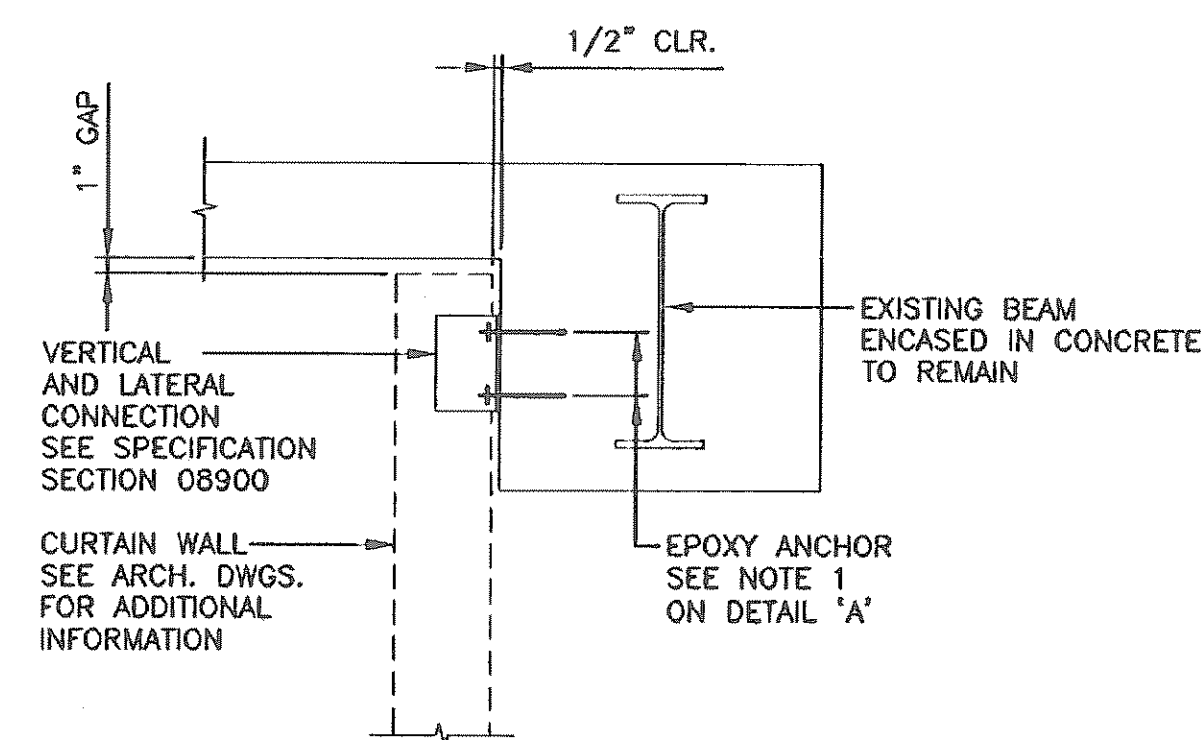
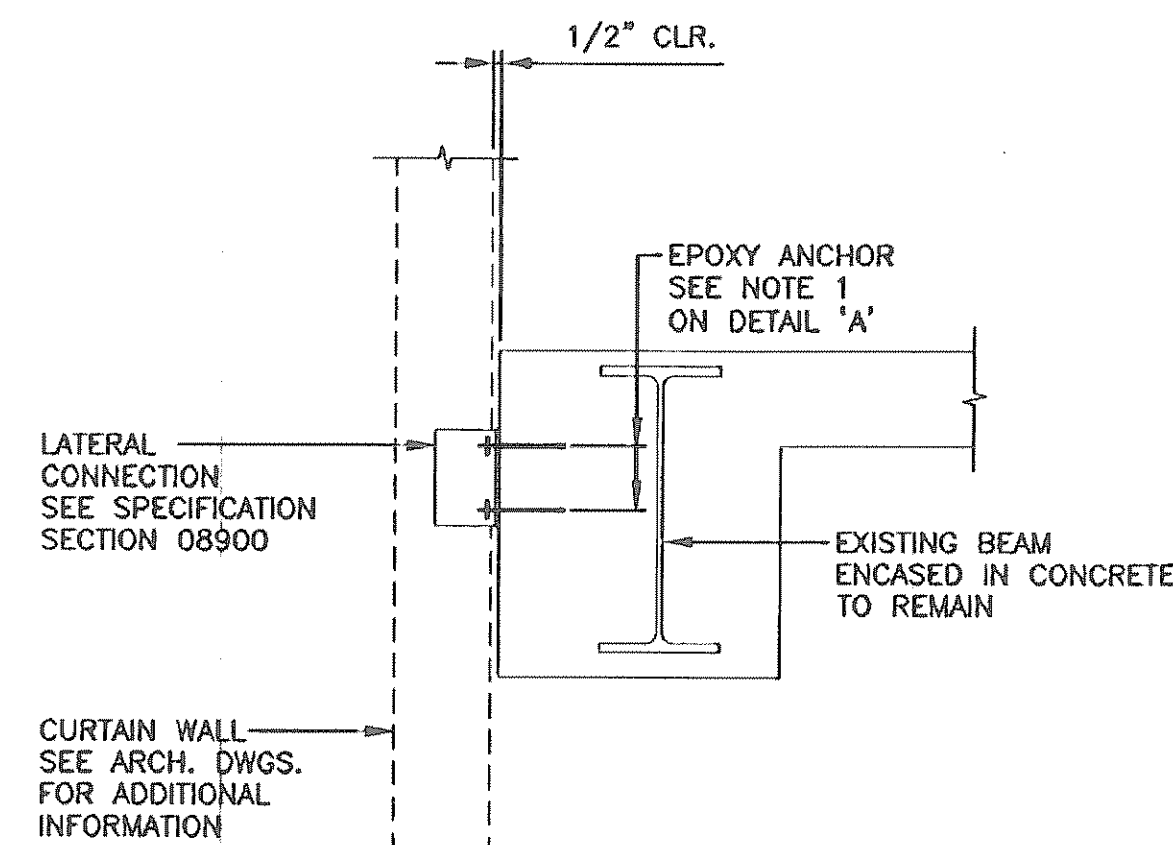
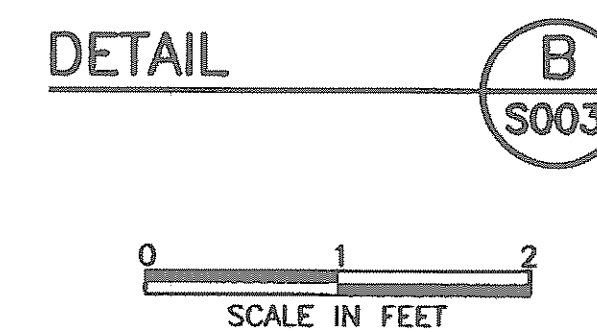
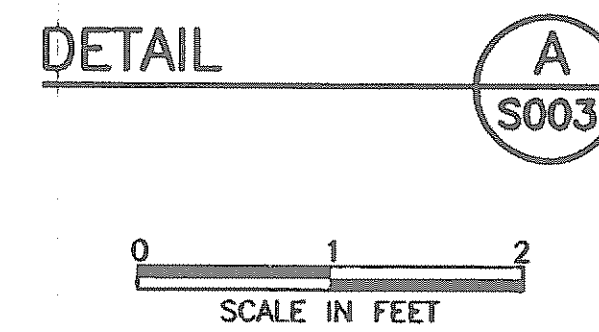


JASON LEE
N.Y. Professional Engineer # 081525



NOTE:
1. CONTRACTOR SHALL CONSIDER ALL REDUCTIONS IN CAPACITY OF EPOXY ANCHORS DUE TO EDGE DISTANCE, SPACING OF ANCHORS AND THE LIKE.

NOTES:
1. PROVIDE LATERAL CONNECTION TO BOTTOM OF EXISTING BEAM IF BEAM IS FOUND. REMOVE EXISTING CONCRETE AS REQUIRED AND REPAIR IN KIND AFTER CONNECTION IS INSTALLED.
2. COORDINATE DIMENSION OF CURB WITH ARCH. DWGS.
3. ROUGHEN SURFACE OF EXISTING CURB.
4. PROVIDE EPOXY ADHESIVE WITH 2" MIN. EMBEDMENT.



| No. | Date | Revision | Approved |
|------------------------|------|----------|----------|
| ENGINEERING DEPARTMENT | | | |
| GOETHALS BRIDGE | | | |

STRUCTURAL

Title

REHABILITATION OF
ADMINISTRATION BUILDING
CURTAIN WALL

DETAILS

This drawing subject to conditions in contract. All inventions, ideas, designs and methods herein are reserved to Port Authority and may not be used without its written consent. All recipients of Contract documents, including bidders and those who do not bid and their prospective subcontractors and suppliers who may receive all or a part of the Contract documents or copies thereof, shall make every effort to ensure the secure and appropriate disposal of the Contract documents to prevent further disclosure of the information contained in the documents. Secure and appropriate disposal includes methods of document destruction such as shredding or arrangements with reliable handlers that ensure that persons do not have access to the documents' contents either before, during, or after disposal. Documents may also be retained for disposal purposes to the Contract Desk on the 2nd floor of Gateway Center, Nassau 11 07102 or the office of the Director of Procurement, One Madison Avenue, 7th Floor, New York NY 10017.

It is a violation of law for any person to alter a document in any way, unless acting under the direction of a licensed professional engineer or registered architect. If this document bearing the seal of an engineer/architect is altered, the altering engineer/architect shall affix to the document their seal and the notation, altered by followed by their signature and the date of such alteration, and a specific description of the alteration.

J.LEE J.LEE T.PETRESHOCK
Designed by Drawn by Checked by

Date 7/14/2010

Contract Number 0
AKG-274.034

Drawing Number S005
PID# 07481000