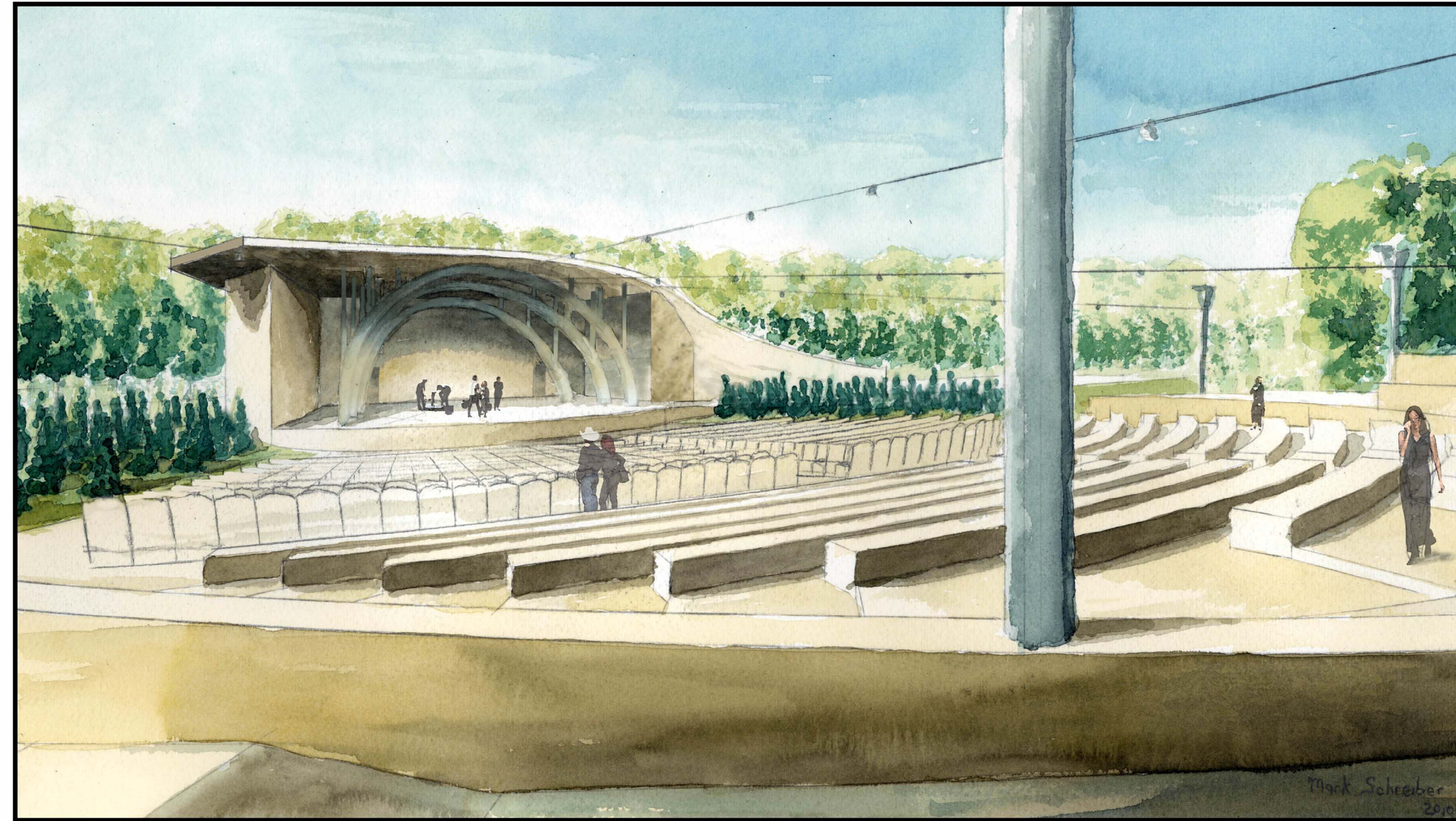


RAHWAY HAMILTON ARTS AMPHITHEATRE

HAMILTON STREET RAHWAY, NEW JERSEY FMG PROJECT NO. 0931



**BID ISSUE
JULY 26, 2010**

OWNER
CITY OF RAHWAY
1 CITY PLAZA
RAHWAY, NJ 07065
Phone: (732) 827-2193

ARCHITECT
FAREWELL MILLS GATSCH ARCHITECTS, LLC
200 FORRESTAL ROAD
PRINCETON, NEW JERSEY 08540-6235
Phone: (609) 452-1777
Fax: (609) 452-7192
E-MAIL: GENERAL@FMG-ARCH.COM

STRUCTURAL ENGINEER
HARRISON-HAMNETT, P.C.
40 KNOWLES STREET
PENNINGTON, NJ 08534
Phone: (609) 818-1808

CIVIL ENGINEER
BOHLER ENGINEERING PC
35 TECHNOLOGY DRIVE
WARREN, NJ 07059
Phone: (908) 668-8300

M/E/P ENGINEER
JOSEPH R. LORING ASSOCIATES, INC.
300 ALEXANDER PARK, SUITE 310
PRINCETON, NJ 08540
Phone: (609) 716-6160

ACOUSTIC/AV DESIGN
HARMONIC DESIGN
110 DOREMUS AVENUE
RIDGWOOD, NJ 07450
Phone: (201) 345-5063

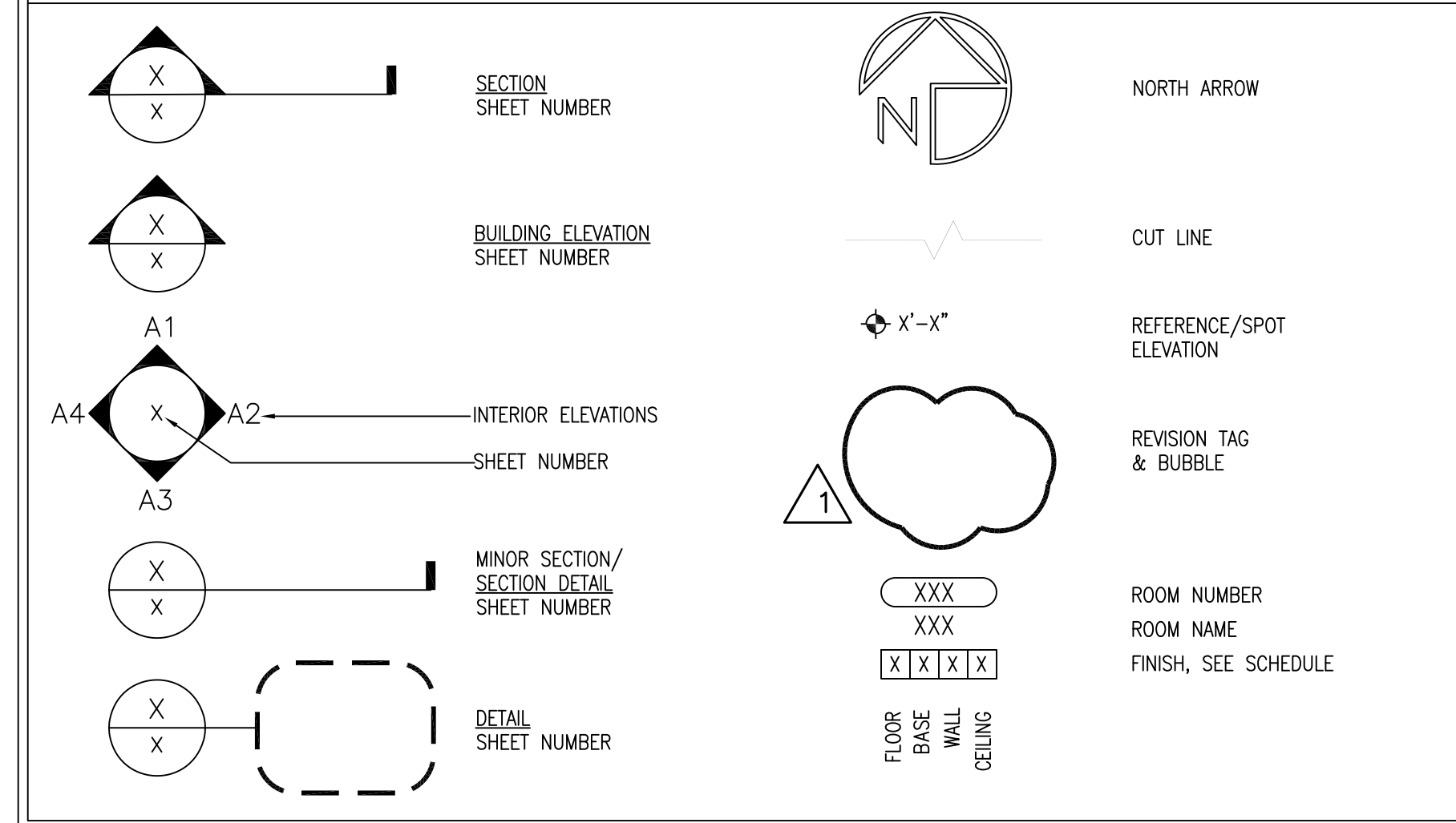
LIGHTING DESIGN
LIGHTING DESIGN COLLABORATIVE
1216 ARCH STREET, SUITE 3A
PHILADELPHIA, PA 19107
Phone: (215) 569-2115

THEATRE PLANNING
FISHER DACHS ASSOCIATES
22 WEST 19TH STREET
NEW YORK, NY 10011
Phone: (212) 691-3020

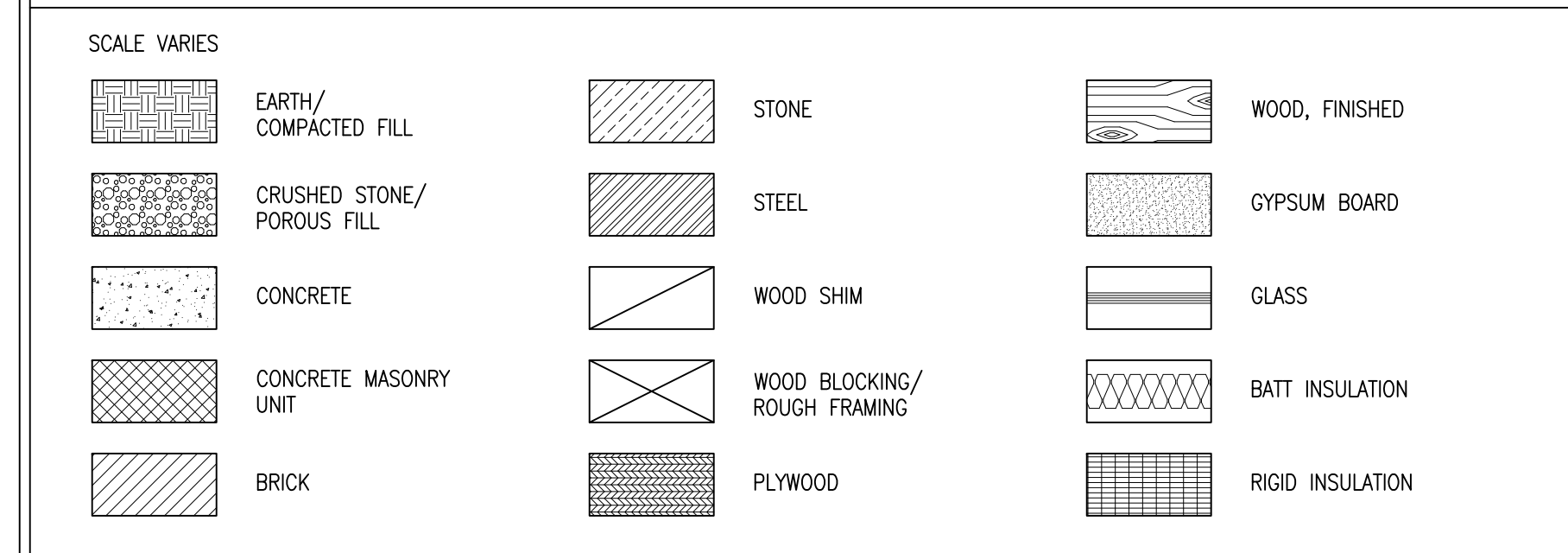
— ABBREVIATIONS —

AFB	ABOVE FINISHED FLOOR	FOS	FACE OF STUDS	OFF	OFFICE
AP	ACCESS PANEL	FW	FACE OF WALL	OC	ON CENTER (S)
ACT	ACOUSTICAL CEILING TILE	FN	FINISH (ED)	OPG	OPENING
A/C	AIR CONDITIONING	FFL	FINISH FLOOR LEVEL	OPP	OPPOSITE
ALT	ALTERNATE	FE	FIRE EXTINGUISHER	OR	OVERALL
ALUM	ALUMINUM	FEC	FIRE EXTINGUISHER CABINET	OH	OVERHEAD
AB	ANCHOR BOLT	FPRF	FIREPROOF (ING)	PTD	PAINTED
ANOD	ANODIC, ANODIZED	FLR	FLOOR (ING)	PAK (D), (NG)	PAK (D), (NG)
ARCH	ARCHITECT (URAL)	FD	FLOOR DRAIN	PVMT	PAVEMENT
ASPH	ASPHALT	FM	FLOOR MAT & FRAME	PLAM	PLASTIC LAMINATE
ASTM	AMERICAN SOCIETY FOR TESTING MATERIALS	FTG	FOOTING	PLYWD	PLYWOOD
AUX	AUXILIARY	FR	FRAME (D), (ING)	PVC	POLYVINYL CHLORIDE
BRG	BEARING	FBO	FURNISHED BY OTHERS	PSI	POUNDS PER SQUARE INCH
BD	BOARD	FURR	FURRED (NG)	PSF	POUNDS PER SQUARE FOOT
BS	BOTH SIDES	GA	GAGE, GAUGE	PS	PROJECTION SCREEN
BOTT	BOTTOM	GALV	GALVANIZED	QTY	QUANTITY
BLDG	BUILDING	GB	GRAB BAR	RAD	RADIUS
CAB	CABINET	GC	GENERAL CONTRACTOR	REF	REFERENCE
CARP	CARPET	GL	GLASS, GLAZING	REFR	REFRIGERATOR
CLG	CEILING	GP	GYPSUM BOARD	REIN	REINFORCING
CTR	CENTER	HC	HANDICAPPED	REDD	REQUIRED
<	CENTER LINE	HDR	HEADER	REVISION (S), REVISED	
CT	CERAMIC TILE	HVAC	HEATING/VENTILATING/AIR CONDITIONING	RH	RIGHT HAND
C	CHANNEL	HT	HEIGHT	R	RISER
CLR	CLEAR (ANCE)	HP	HIGH POINT	RD	ROOF DRAIN
CL	CLOSE	HM	HOLLOW METAL	RM	ROOM
COL	COLUMN	HRZ	HORIZONTAL	RO	ROUGH OPENING
CONC	CONCRETE	HS	HOSE BIBB	SEC	SECTION
CMU	CONCRETE MASONRY UNIT	HWH	HOT WATER HEATER	SHT	SHEET
CONST	CONSTRUCTION	IN	INCH	SIM	SIMILAR
CONT	CONTINUOUS OR CONTINUE	INSUL	INSULATE (D), (ON)	SM	SOUND TRANSMISSION
CONTR	CONTRACT (OR)	INT	INTERIOR	SQ	SQUARE
COORD	COORDINATE	JAN	JANITOR	SF	SQUARE FEET
CORR	CORROSION	JT	JOINT	SS	STAINLESS STEEL
CRS	COURSE(S)	JST	JOIST	STD	STANDARD
DEMOL	DEMOLISH, DEMOLITION	LAV	LAVATORY	STL	STEEL
DTL	DETAIL	LH	LEFT HAND	STOR	STORAGE
DIAG	DIAGONAL	LT	LEFT	STR	STRUCTURAL
DN	DOWN	LP	LOW POINT	SUSP	SUSPENDED
DNW	DRAWER	MB	MARKER BOARD	TB	TACKBOARD
DWG	DRAWING	MFR	MANUFACTURE (ER)	THK	THICK (NESS)
D	DRAIN	MO	MASONRY OPENING	T&G	TONGUE AND GROOVE
EA	EACH	MAX	MAXIMUM	TAB	TOP AND BOTTOM
E	EAST	MCH	MECHANIC (AL)	TOP OF SLAB	
ELEC	ELECTRIC (AL)	MTL	METAL	TOW	TOP OF STEEL
EWC	ELECTRIC WATER COOLER	MISC	MISCELLANEOUS	TYP	TYPICAL
EL	ELEVATION	MIS	MISCELLANEOUS UNLESS OTHERWISE NOTED	UL	UNDERWRITERS LABORATORY
EMER	EMERGENCY	MTD	MOUNTED	UNO	UNLESS OTHERWISE NOTED
ENCL	ENCLOSE (URE)	MULL	MULLION	U	URNAL
EQU	EQUAL	NOM	NOMINAL	VERT	VERTICAL
EQUIP	EQUIPMENT	N	NORTH	VIF	VERIFY IN FIELD
EXIST	EXISTING	NA	NOT APPLICABLE	VCT	VINYL COMPOSITION TILE
EB	EXPANSION BOLT	NTS	NOT TO SCALE	WC	WATER CLOSET
EJ	EXPANSION JOINT	NO	NUMBER	WWF	WELDED WIRE FABRIC
EXP	EXPOSED			W	WEST
EXT	EXTERIOR			W	WIDTH, WIDE
				W/	WITH
				W/O	WITHOUT
				WD	WOOD

— TYPICAL SYMBOL LEGEND —



— MATERIALS LEGEND —



SHEET #	SHEET TITLE	DATE
A-0.0	COVER SHEET	07.26.10
CIVIL DRAWINGS		
C-1	COVER SHEET	07.26.10
C-2	DEMOLITION PLAN	07.26.10
C-3	SITE PLAN	07.26.10
C-3.01	SITE PLAN TAKE OFF	07.26.10
C-3.02	CONCRETE KEY PLAN	07.26.10
C-4	GRADING AND DRAINAGE PLAN	07.26.10
C-5	UTILITY PLAN	07.26.10
C-6	LIGHTING PLAN	07.26.10
C-7	LANDSCAPE PLAN	07.26.10
C-8	SOIL EROSION & SEDIMENT CONTROL PLAN	07.26.10
C-9	SANITARY SEWER PLAN	07.26.10
C-10	DETAIL SHEET A	07.26.10
C-11	DETAIL SHEET B	07.26.10
C-12	DETAIL SHEET C	07.26.10
C-13	DETAIL SHEET D	07.26.10
C-14	DETAIL SHEET E	07.26.10
C-15	DETAIL SHEET F	07.26.10
C-16	DETAIL SHEET G	07.26.10
C-17	GASION AND BIO-ENGINEERING PLAN AND CROSS SECTIONS	07.26.10
	ALTA/ACSM LAND AND TITLE SURVEY (BY OTHERS)	07.26.10
ARCHITECTURAL DRAWINGS		
A-0.1	CODE SHEET	07.26.10
A-1.0	AMPHITHEATRE LAYOUT & GEOMETRIES	07.26.10
A-1.1	AMPHITHEATRE PLANS	07.26.10
A-1.2	PLATFORM PLANS	07.26.10
A-1.3	CONCESSION & UPPER SEATING PLANS	07.26.10
A-1.4	ROOF PLANS	07.26.10
A-2.0	REFLECTED CEILING PLANS	07.26.10
A-3.0	PLATFORM SECTIONS & ELEVATIONS	07.26.10
A-3.1	PLATFORM SECTIONS & DETAILS	07.26.10
A-3.2	CONCESSION & UPPER SEATING SECTIONS, ELEVATIONS & DETAILS	07.26.10
A-6.0	DOOR SCHEDULE/PARTITION TYPES	07.26.10
A-7.0	STAIR/RAMP PLANS, ELEVATIONS, SECTIONS & DETAILS	07.26.10
A-7.1	CROW'S NEST/CABLE MASTS	07.26.10
A-8.0	TOILET ROOM PLANS & ELEVATIONS/INTERIOR ELEVATIONS	07.26.10
STRUCTURAL DRAWINGS		
S-1.0	FOUNDATION PLAN	07.26.10
S-1.1	FRAMING PLAN	07.26.10
S-2.0	FOUNDATION SECTIONS	07.26.10
S-2.1	FLOOR & ROOF SECTIONS	07.26.10
S-3.0	TYPICAL DETAILS & GENERAL NOTES	07.26.10
MECHANICAL DRAWINGS		
M-0.1	GENERAL NOTES & SYMBOL LISTS	07.26.10
M-1.0	AMPHITHEATRE PART PLANS	07.26.10
M-X.1	DETAILS	07.26.10
ELECTRICAL DRAWINGS		
E-0.1	GENERAL NOTES & SYMBOL LIST	07.26.10
E-1.0P	AMPHITHEATRE POWER PLAN	07.26.10
E-1.0L	AMPHITHEATRE LIGHTING PLAN	07.26.10
E-1.1	AMPHITHEATRE PART PLANS	07.26.10
E-2.1	POWER & FIRE ALARM RISER DIAGRAMS	07.26.10
E-2.2	PANELBOARD SCHEDULE	07.26.10
E-2.3	DETAILS SHEET #1	07.26.10
E-2.4	DETAILS SHEET #2	07.26.10
PLUMBING DRAWINGS		
P-0.1	SYMBOL LISTS, NOTES & SCHEDULES	07.26.10
P-1.0	AMPHITHEATRE PLAN	07.26.10
P-2.1	RISER DIAGRAMS & DETAILS	07.26.10
P-X.1	DETAILS	07.26.10
THEATRICAL DRAWINGS		
ETL-1.0	THEATRICAL LIGHTING FUNCTIONAL DIAGRAM	07.26.10
ETL-1.1	DIMMER RACK AND EQUIPMENT RACK	07.26.10
ETL-1.2	CONTROL DEVICES	07.26.10
ETL-1.3	OUTLET DEVICES	07.26.10